



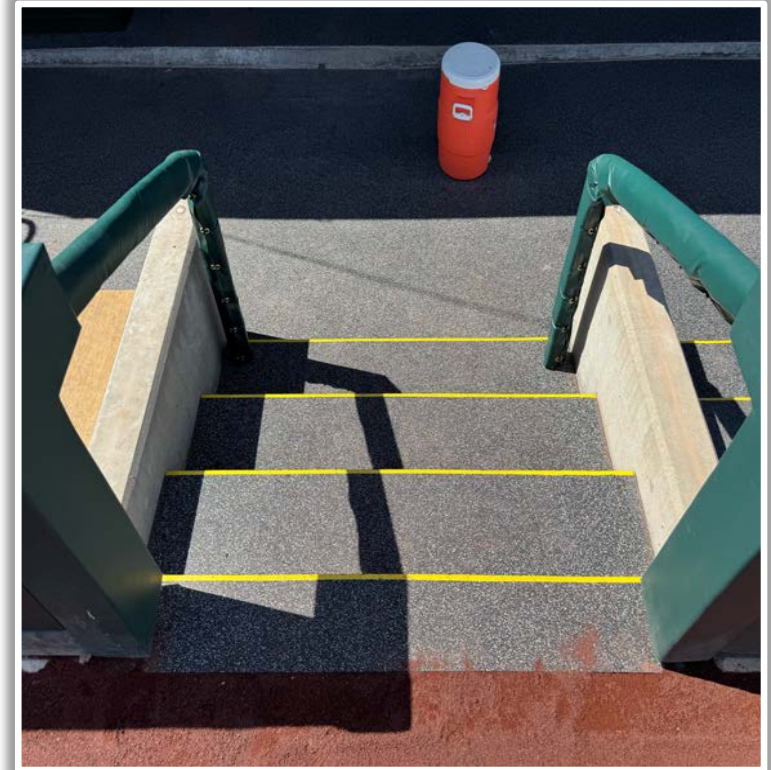
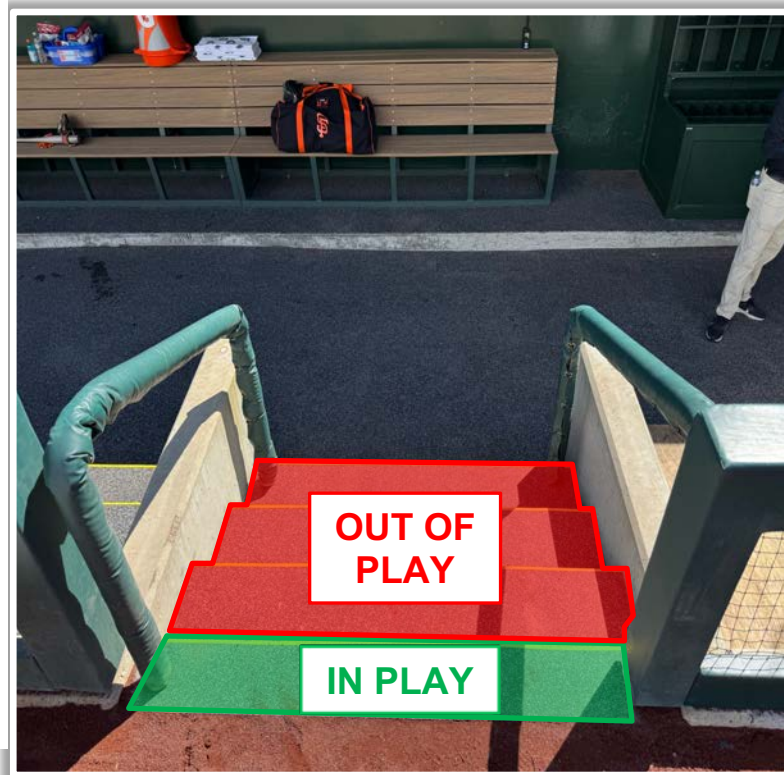
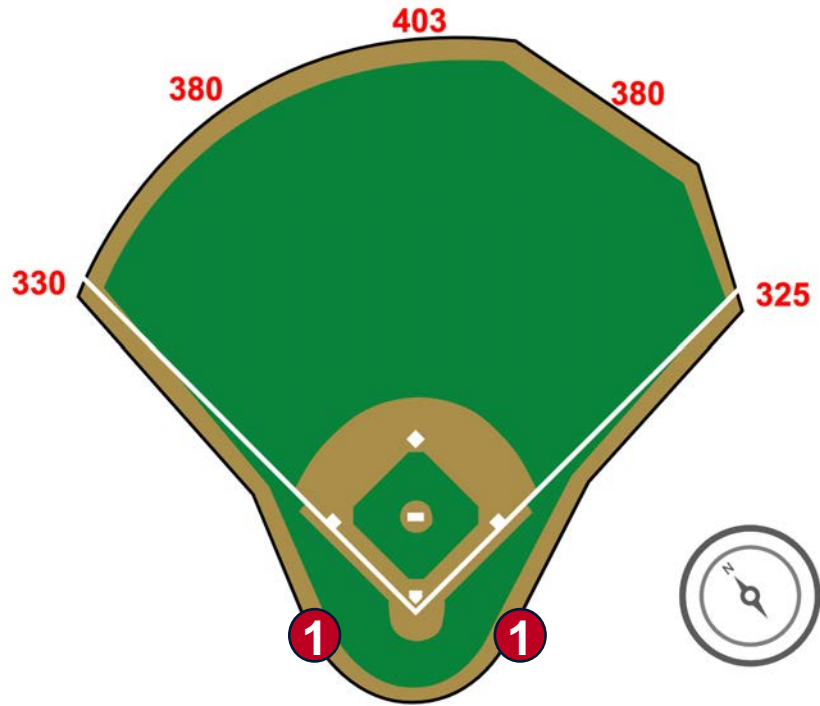
# Sutter Health Park

**2025 Ground Rules**

Date: March 31, 2025

# Sutter Health Park Ground Rules

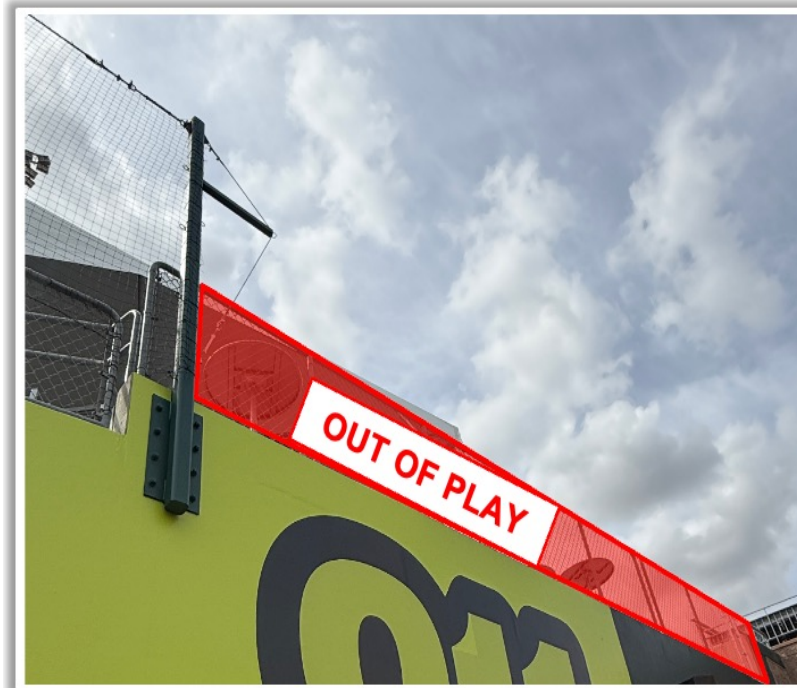
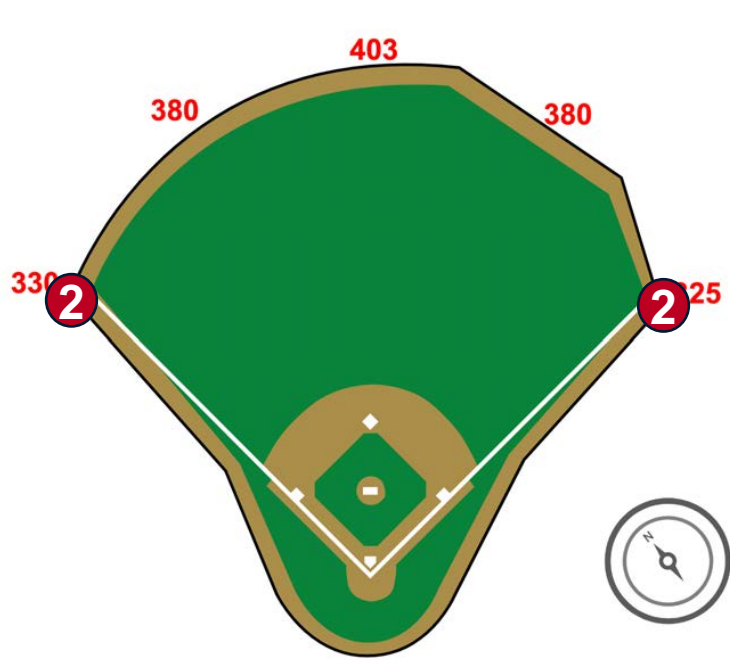
**RULE #1:** The top step inside the entrances of the dugouts is flush with the playing surface and is **LIVE and IN PLAY**.





# | Sutter Health Park Ground Rules

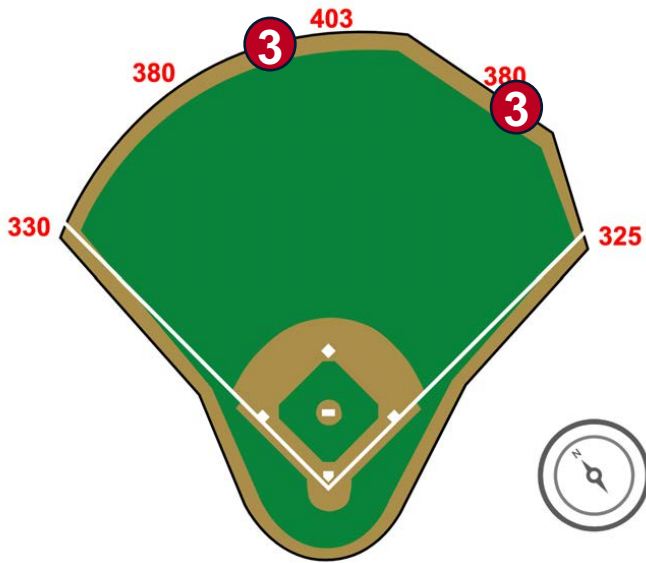
**RULE #2:** The green walls above the padding in the Left and Right Field corners are **IN PLAY**. The metal fencing above the walls beyond the end of the fan safety netting is **OUT OF PLAY**.



# Sutter Health Park Ground Rules

**RULE #3:** The metal fence post caps behind the outfield wall are recessed and **OUT OF PLAY**.

- Ball in flight striking the recessed metal post cap: **Home Run**
- Bouncing ball striking the recessed metal post cap: **Two Bases**

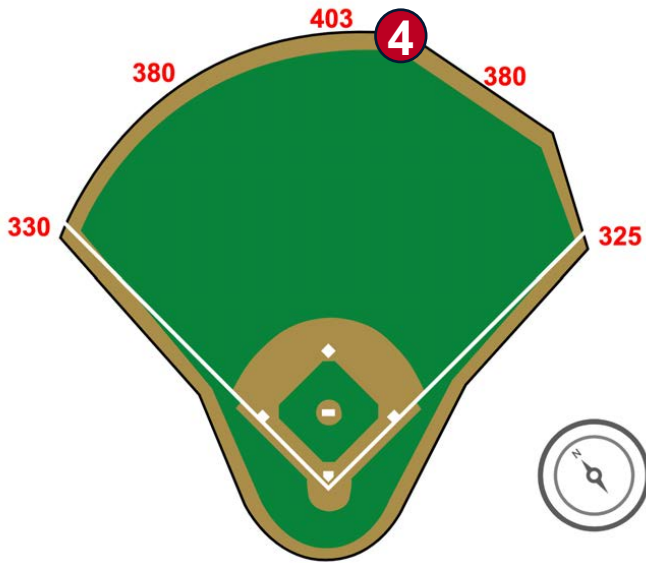




# | Sutter Health Park Ground Rules

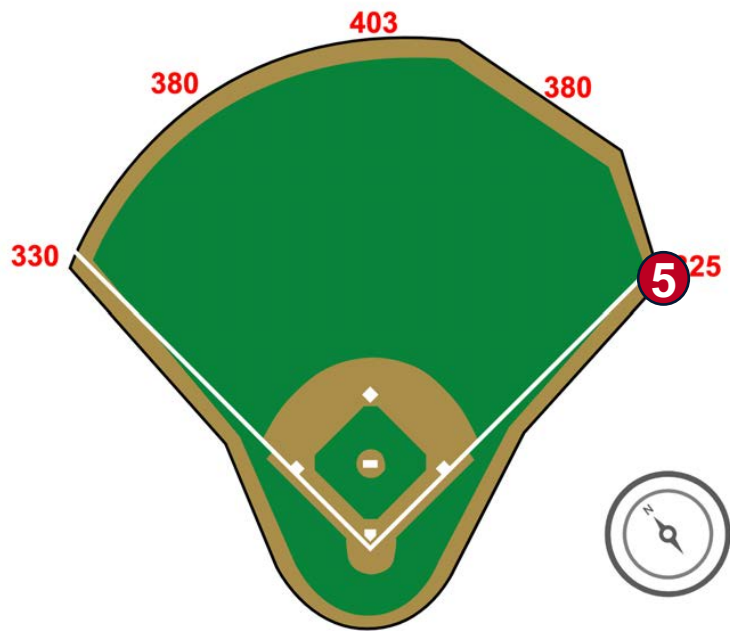
**RULE #4:** The black metal pole beyond the center field wall is recessed and **OUT OF PLAY**.

- Ball in flight striking the recessed metal pole: **Home Run**
- Bouncing ball striking the recessed metal pole: **Two Bases**



# Sutter Health Park Ground Rules

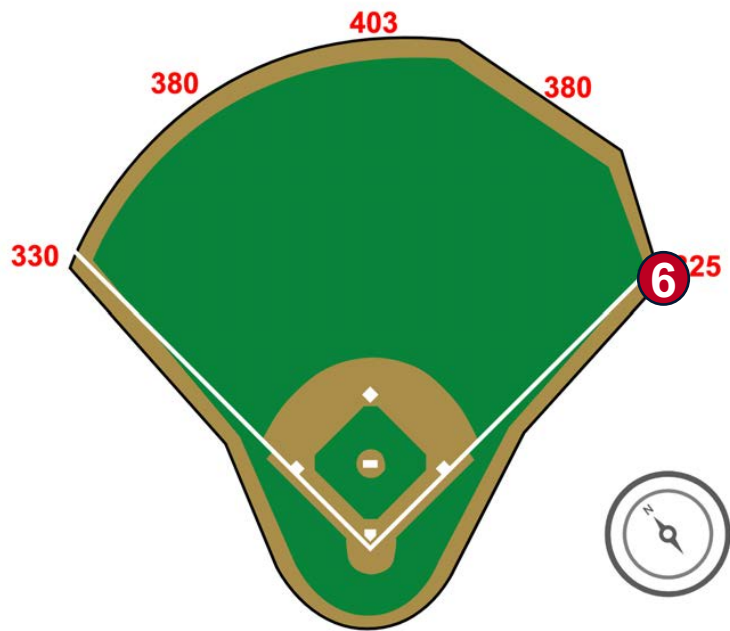
**RULE #5:** The right field foul pole is **IN PLAY** from the ground to the metal pole. The support base of the pole is **IN PLAY**. A ball that hits the metal foul pole in flight is a **HOME RUN**.





# Sutter Health Park Ground Rules

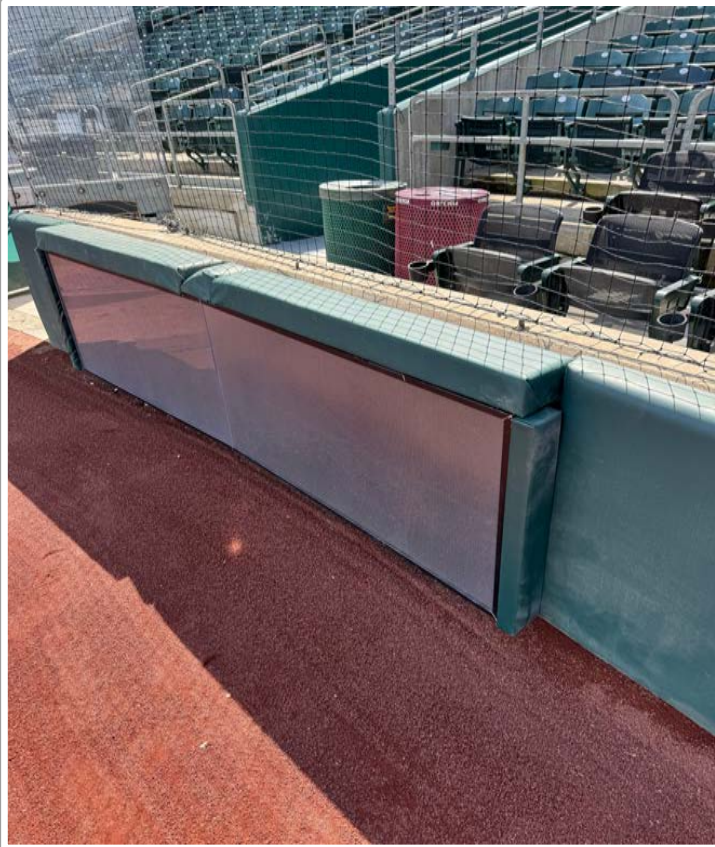
**RULE #6:** A batted ball in flight that strikes the yellow foul line or support base above the right field wall and ricochets directly into the bullpen is a **HOME RUN**.





# | Sutter Health Park Ground Rules

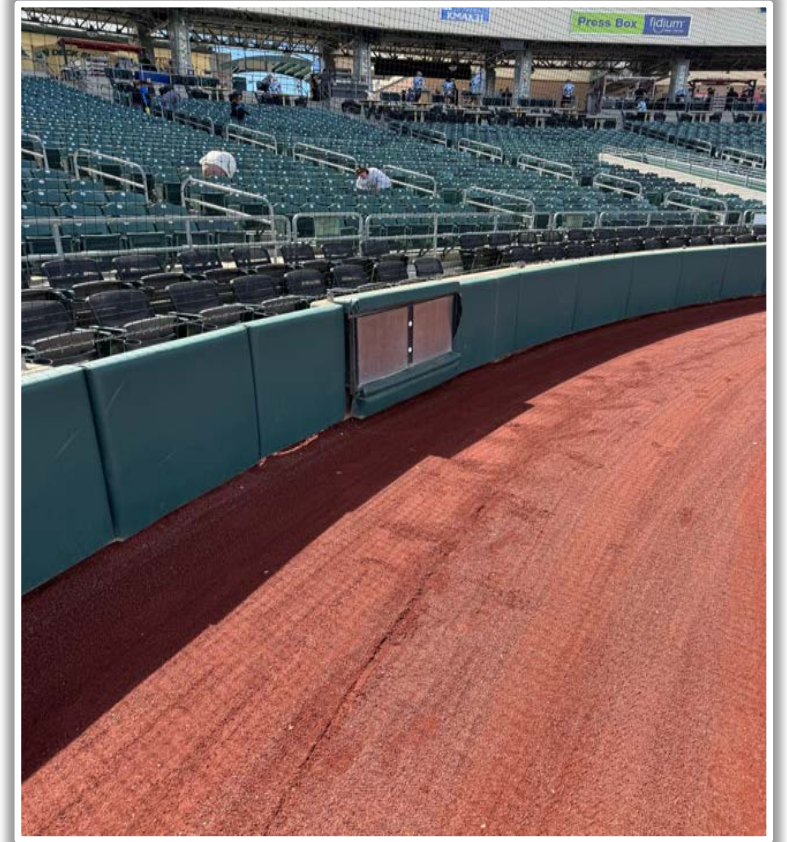
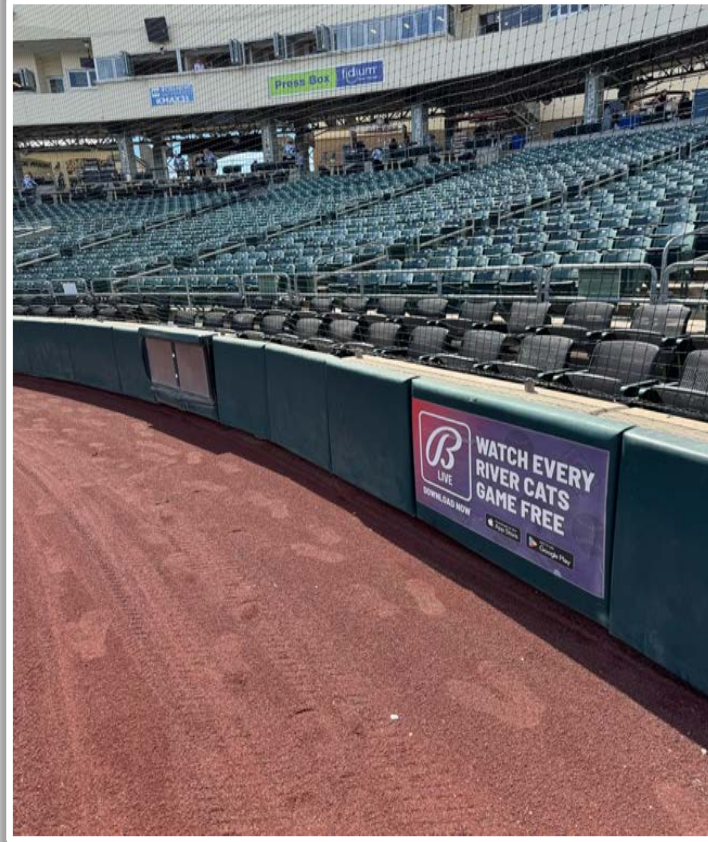
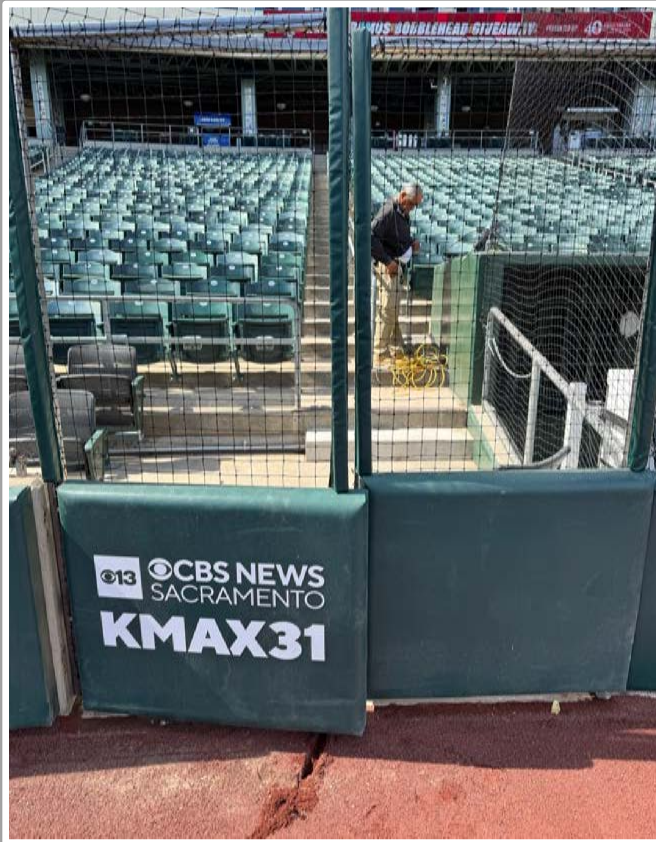
## Backstop Photos:





# | Sutter Health Park Ground Rules

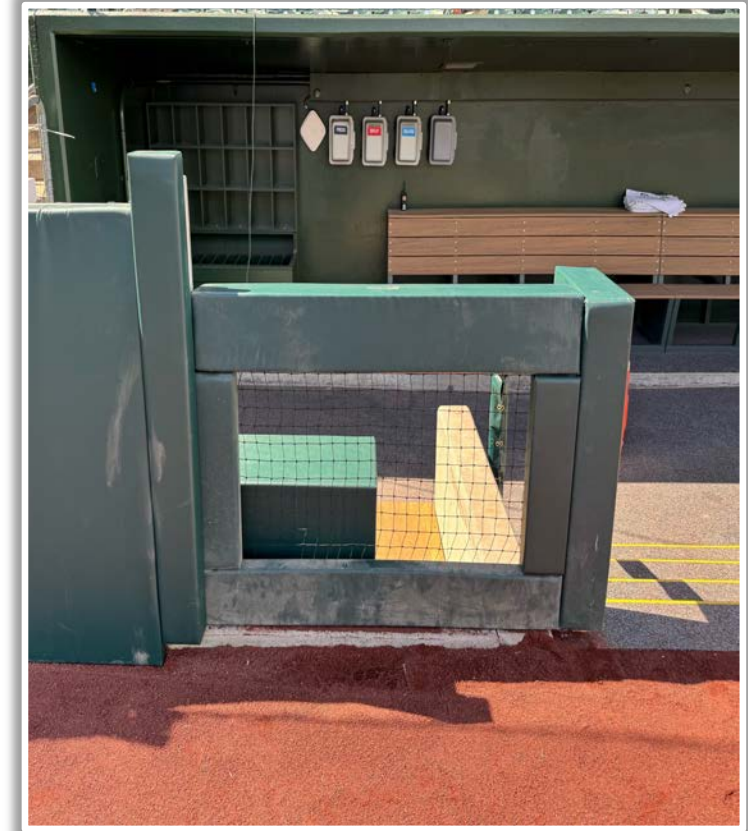
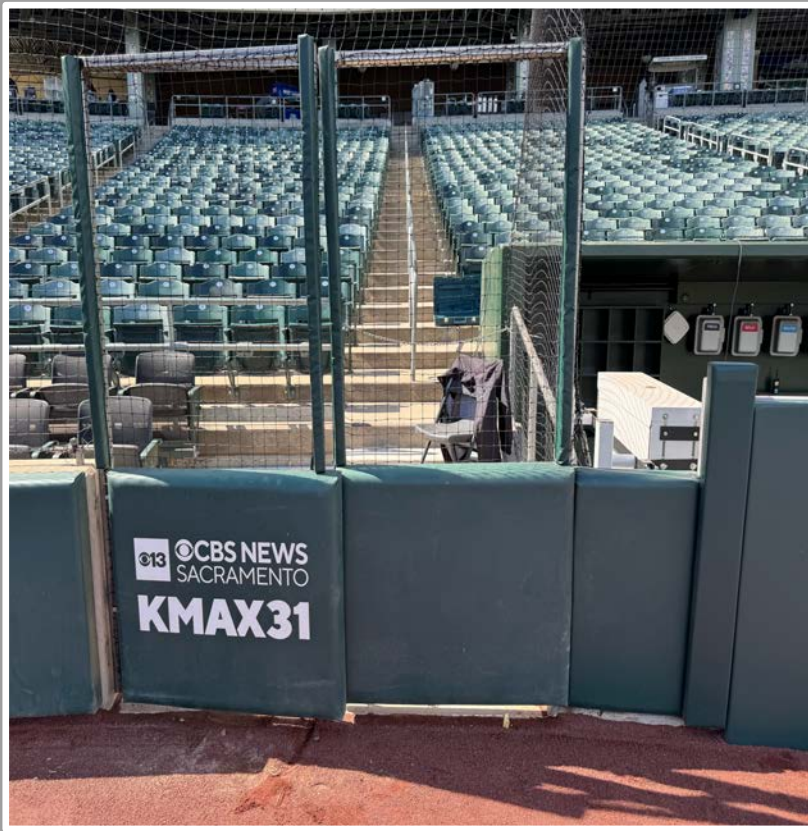
## Backstop Photos (Cont.):





# | Sutter Health Park Ground Rules

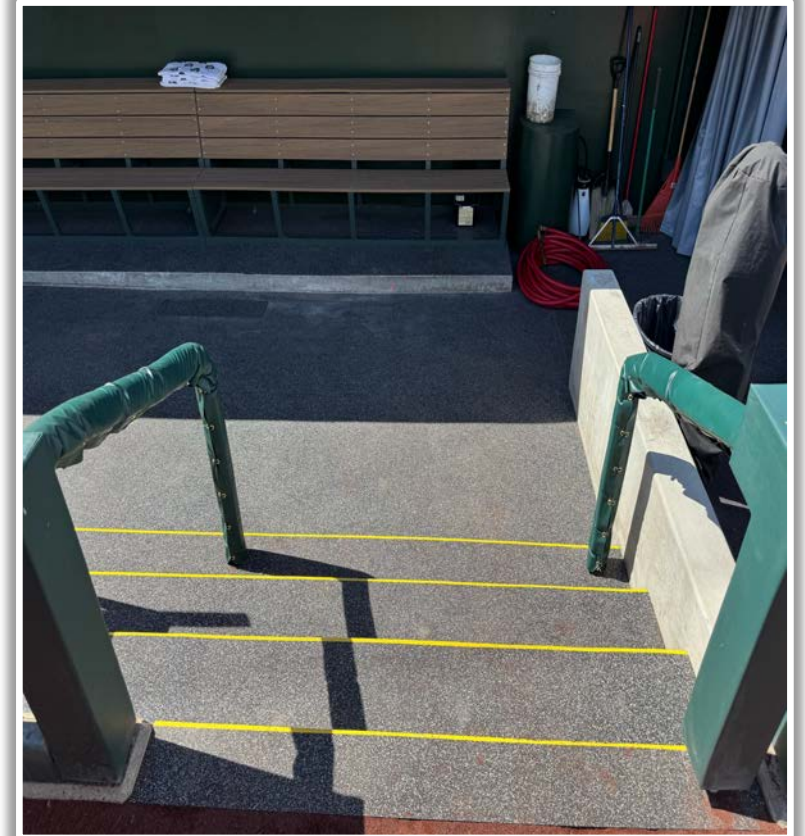
## 3B Dugout Photos:





# | Sutter Health Park Ground Rules

## 3B Dugout Photos (Cont.):





# | Sutter Health Park Ground Rules

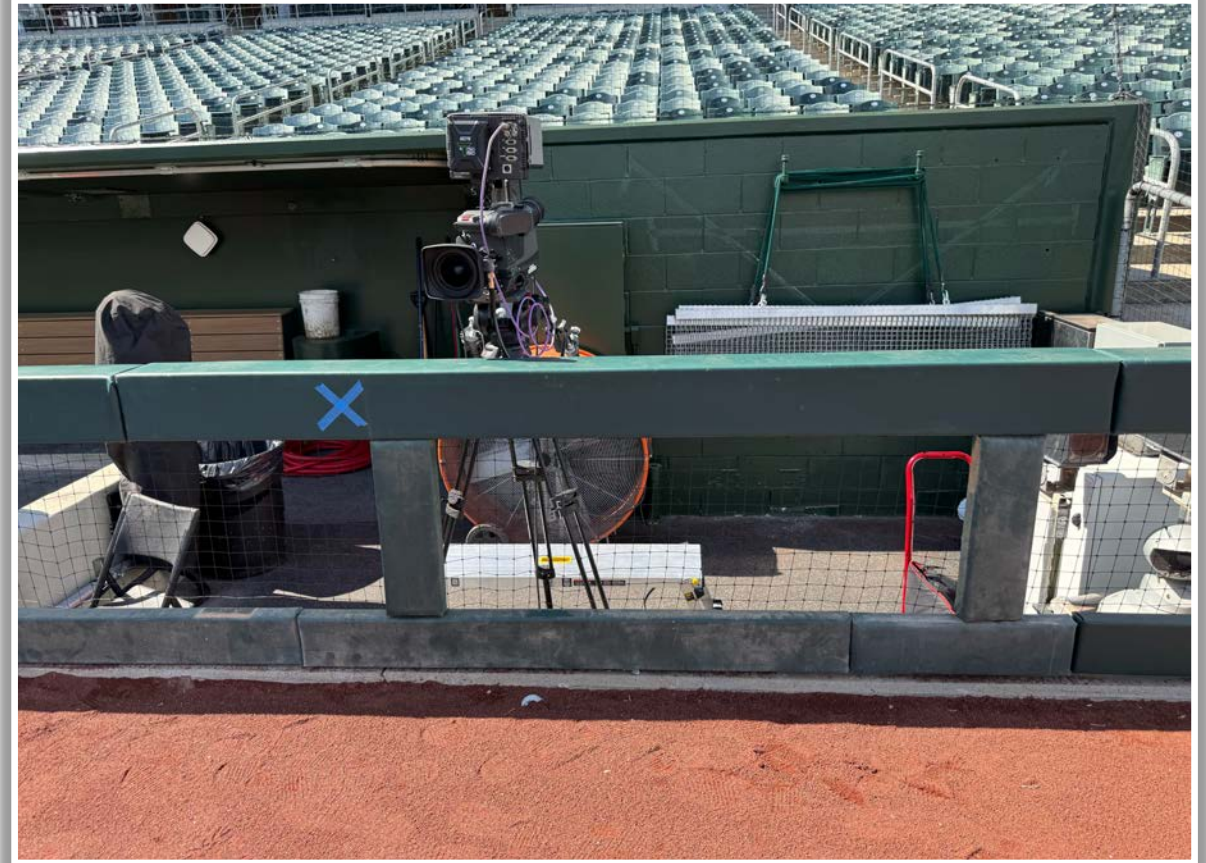
## 3B Dugout iPad Cameras:





# | Sutter Health Park Ground Rules

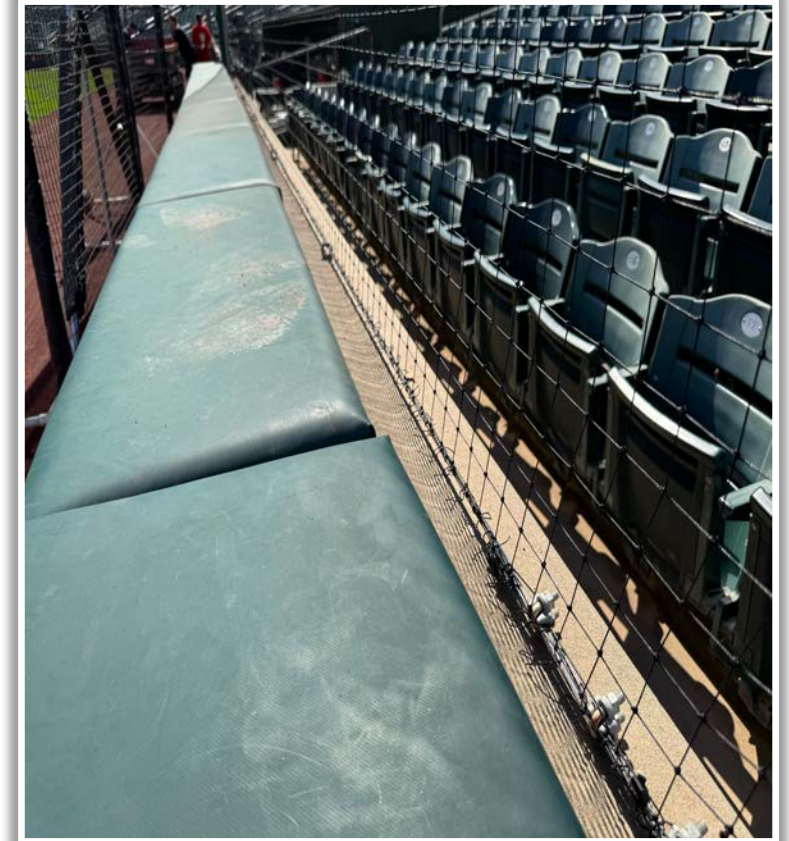
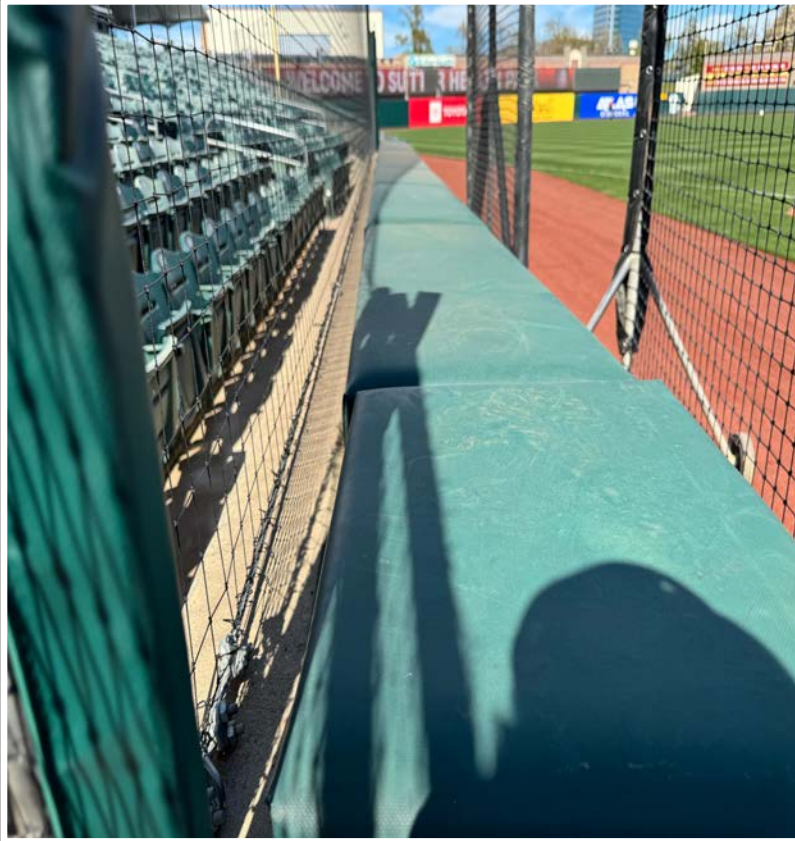
## 3B Camera Well Photo:





# | Sutter Health Park Ground Rules

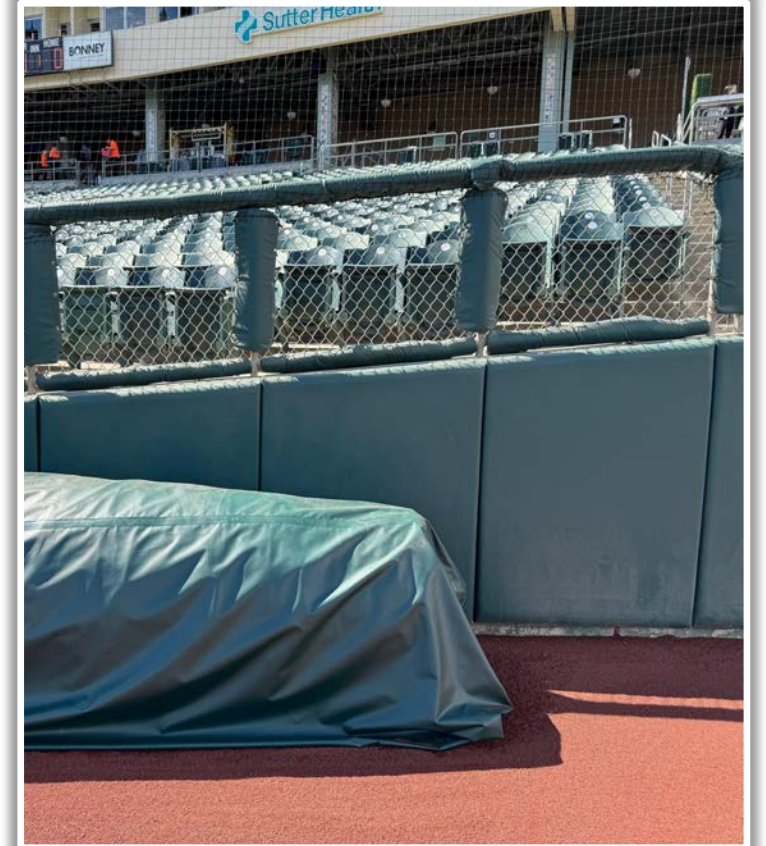
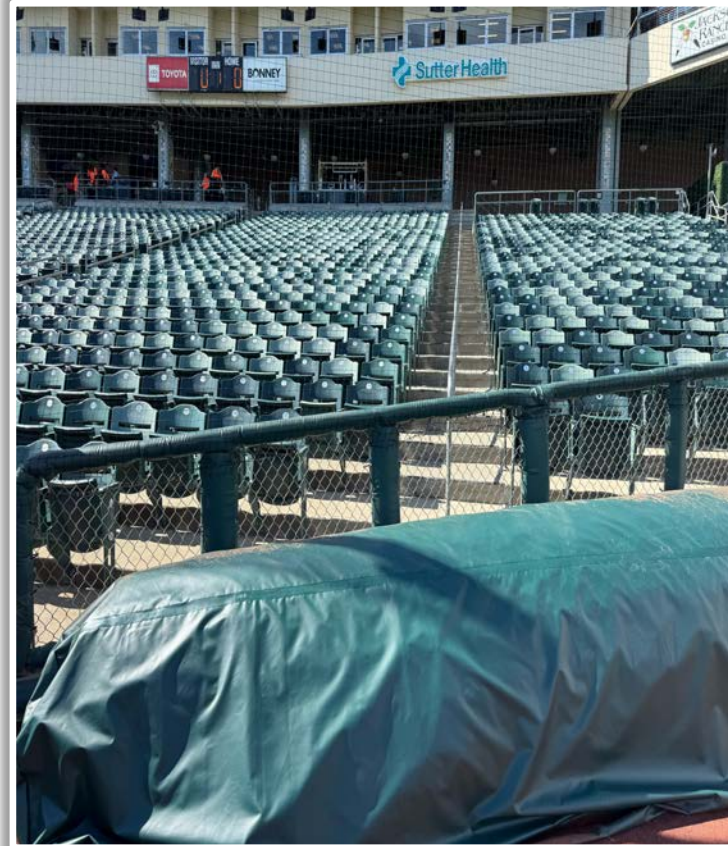
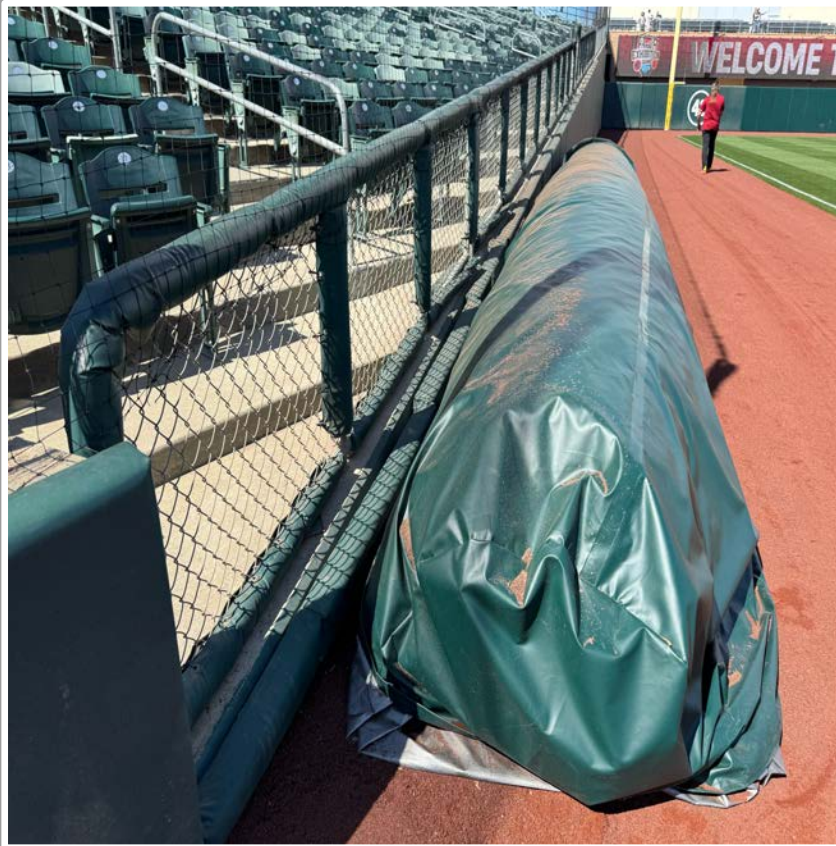
## 3B Fan Safety Netting Photos:





# | Sutter Health Park Ground Rules

## Tarp Photos:





# | Sutter Health Park Ground Rules

## LF Corner Photos:





# | Sutter Health Park Ground Rules

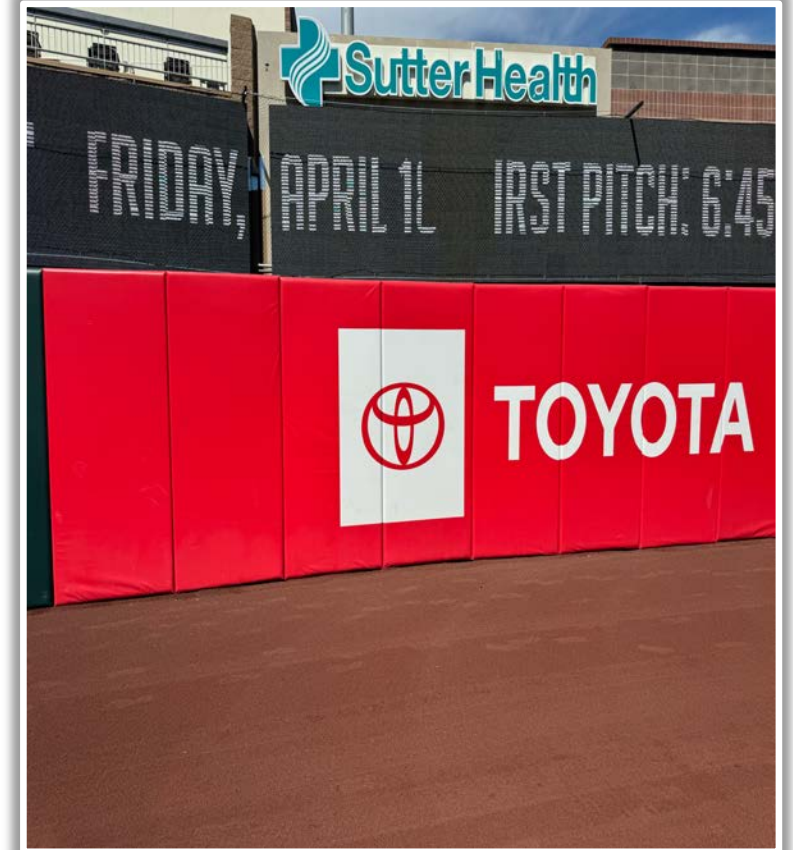
## LF Foul Pole Photos:





# | Sutter Health Park Ground Rules

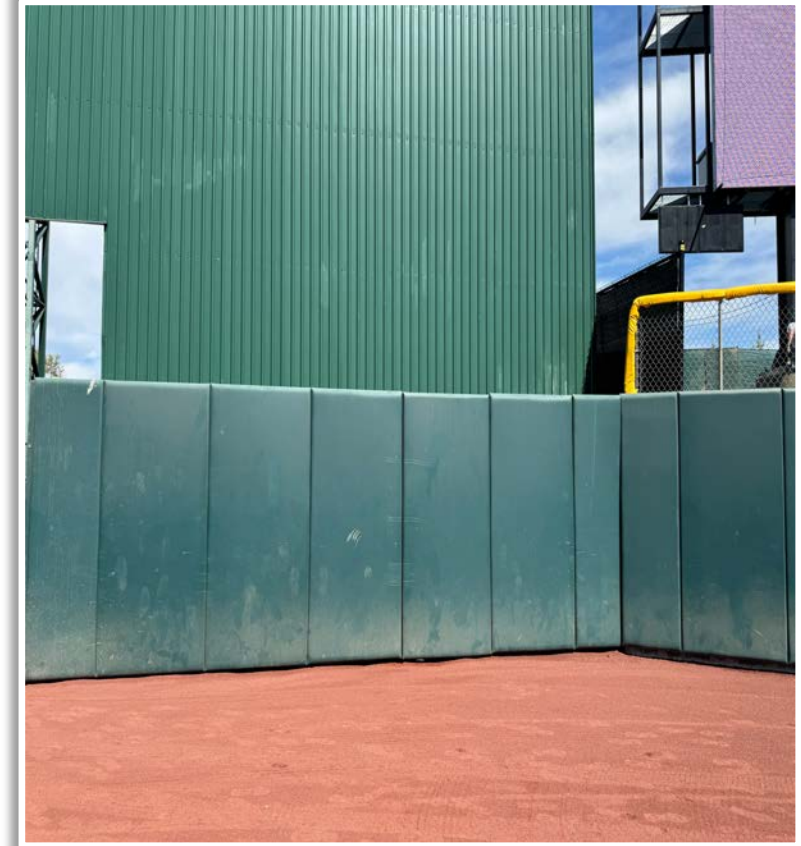
## LF Wall Photos:





# | Sutter Health Park Ground Rules

## CF Wall and Batter's Eye Photos:





# | Sutter Health Park Ground Rules

## RCF Wall Photos:





# | Sutter Health Park Ground Rules

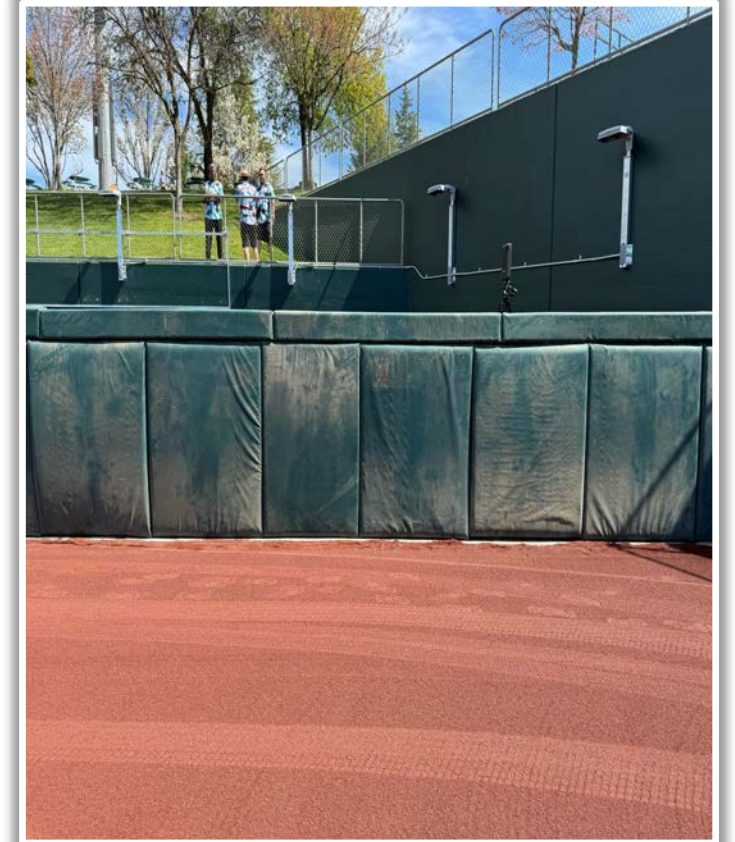
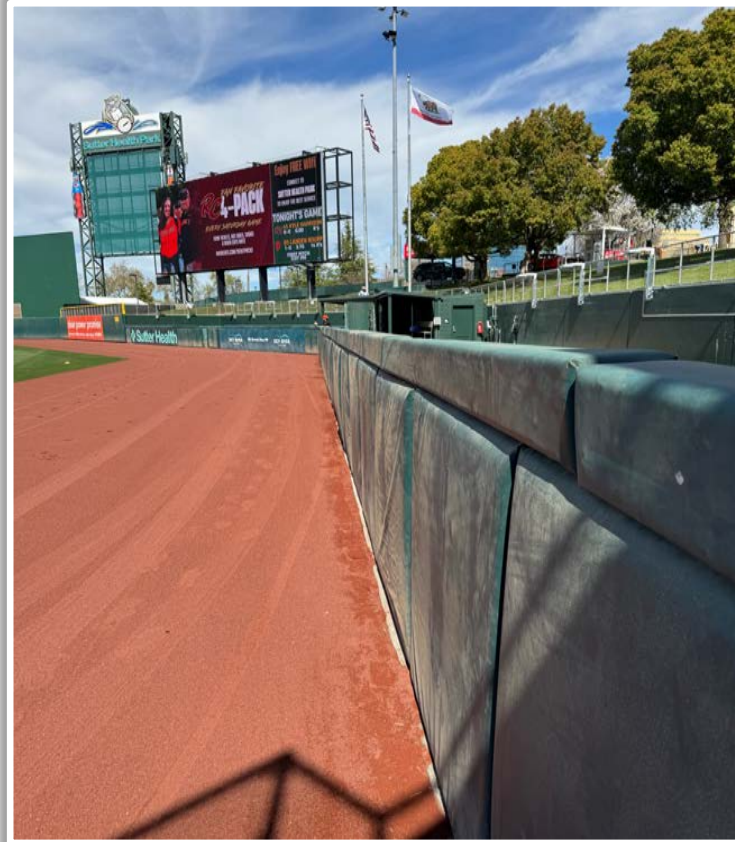
## RF Wall Photos:





# | Sutter Health Park Ground Rules

## RF Wall Photos (Cont.):





# | Sutter Health Park Ground Rules

## RF Corner Photos:



# | Sutter Health Park Ground Rules

## RF Foul Pole Photos:





# | Sutter Health Park Ground Rules

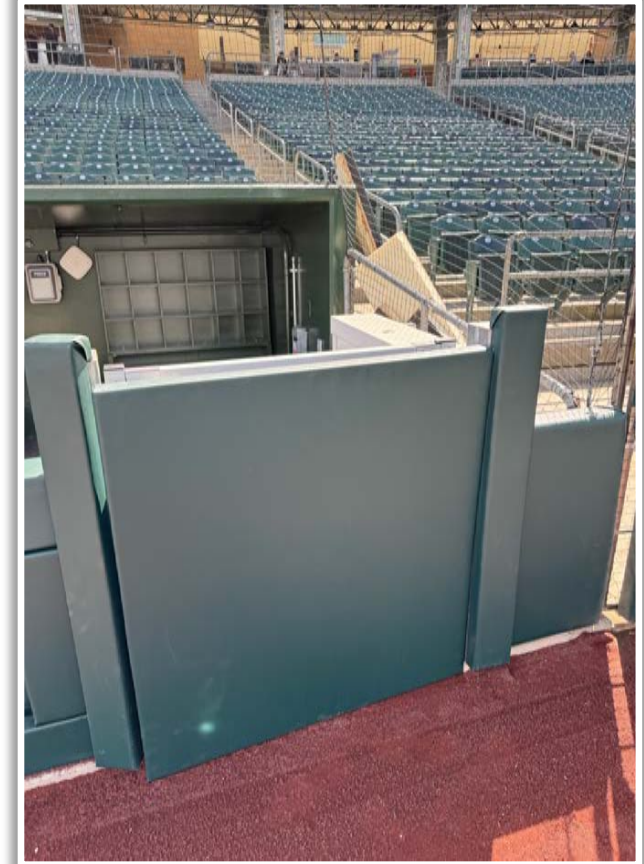
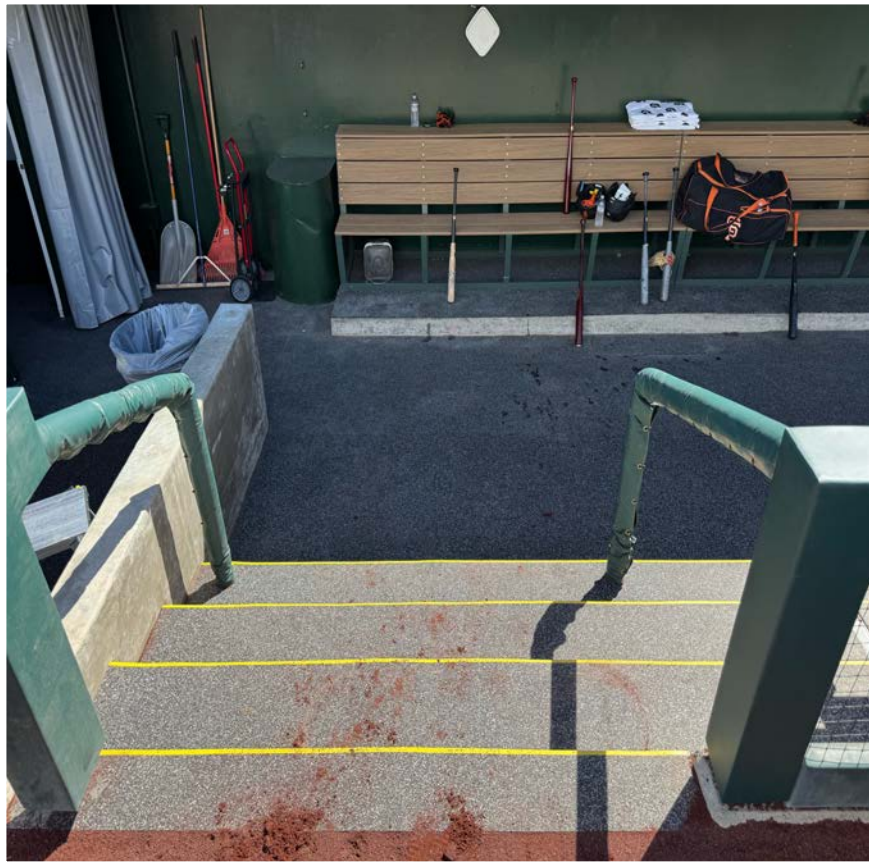
## RF Extended Fan Safety Netting Photos:





# | Sutter Health Park Ground Rules

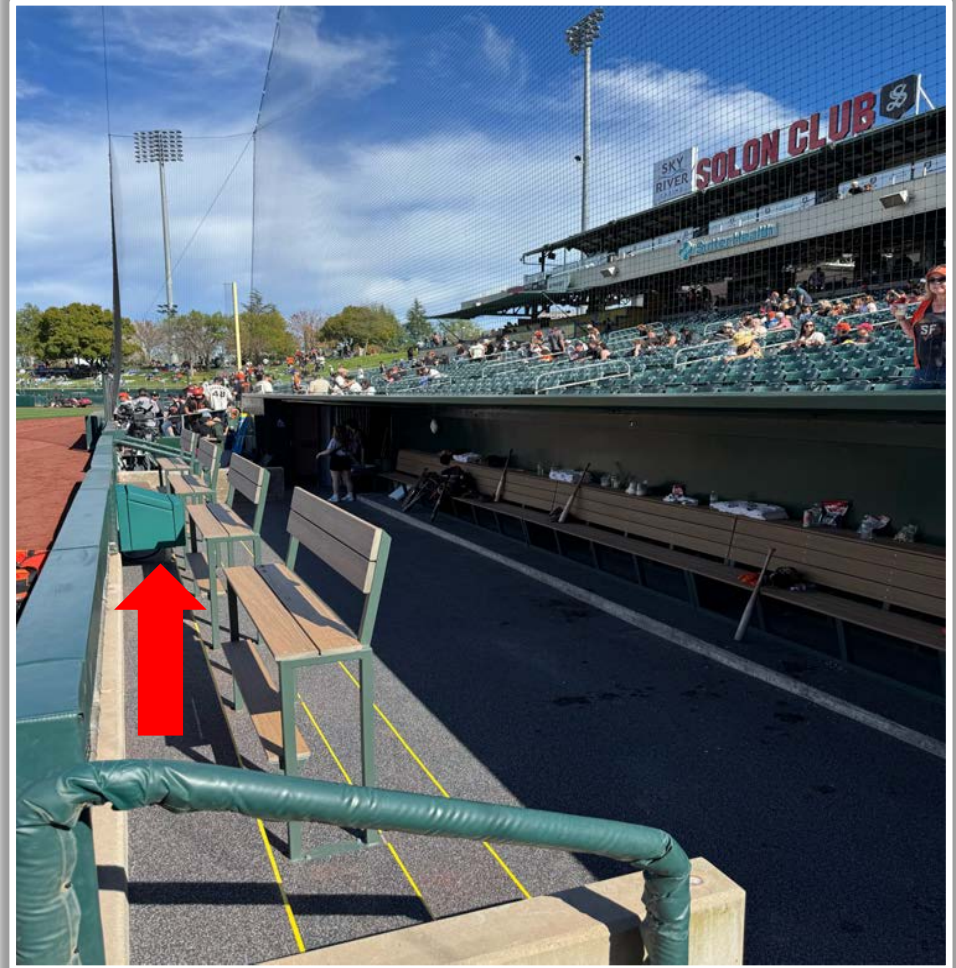
## 1B Dugout Photos:





# | Sutter Health Park Ground Rules

## 1B Dugout iPad Camera Photos:





# Sutter Health Park

**2025 Ground Rules**

Date: March 31, 2025