

# 2024 GROUP OUTING AND TICKET PACKAGES



563-324-3000  
RIVERBANDITS.COM



QCRIVERBANDITS



# TICKET PLANS

	GA	BOX	CLUB*
FULL SEASON	\$329	\$739	\$2,699
HALF SEASON	-	\$399	\$1,499
12 GAME MINI PLAN	-	\$149	-

\*Learn more about the Smart Toyota Diamond Club on page 2



## VOUCHER BOOKS

10 Anytime Vouchers

GA: \$89 | BOX: \$139



## GROUP TICKET PRICING

GROUP SIZE	10-99	100+
BOX	\$13	\$12
BLEACHER	\$9	\$8

Add a hot dog, bag of chips, and regular soda voucher to any group ticket purchase for \$8 per person





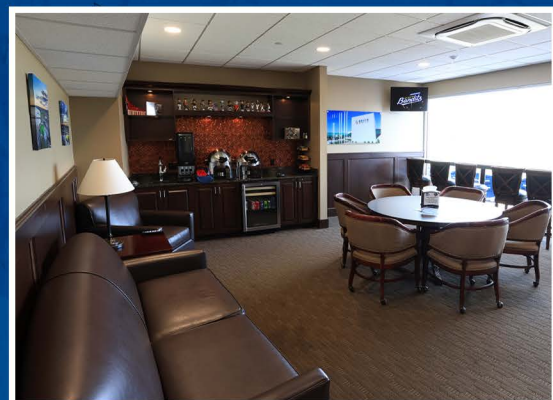
# LUXURY SUITE LEVEL

Entertain in style from a luxury suite at Modern Woodmen Park. Perfect for entertaining family and friends, luxury suites make a lasting impression on any guest. Our suites feature wait-service, indoor/outdoor seating, air conditioning, and cable TV.

**PERFECT FOR PARTIES 20-60**

Food & beverage is additional and can be purchased via our à la carte pre-order menu

	20 TICKETS SINGLE	40 TICKETS DOUBLE	60 TICKETS TRIPLE
SUN-THUR	\$600	\$1,000	\$1,350
FRI/SAT	\$750	\$1,200	\$1,500
	Add up to 4 tickets*	Add up to 8 tickets*	Add up to 12 tickets*
	*Additional suite tickets: \$40 each		

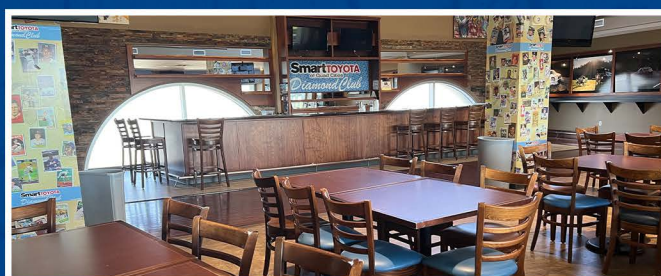


## SMART TOYOTA DIAMOND CLUB

The Smart Toyota Diamond Club is the premier ticket package to entertain family, friends, clients, and employees! Smart Toyota Diamond Club packages include all-you-can-eat rotating food options, soft drinks, and select alcoholic beverages for each game in your package, access to the climate controlled club with a full service bar, and seats right behind home plate.

**18 GAMES: \$999**  
**HALF SEASON: \$1,499**  
**FULL SEASON: \$2,699**  
**SINGLE GAME: \$50\***

\*Groups of 20-35





# BUDWEISER CHAMPIONS CLUB

The Budweiser Champions Club is located on the Luxury Level. The enclosed deck features an expansive view of the field, garage doors that roll up letting the outdoors in, and a balcony that gets you even closer to the action. It is perfect for upscale entertaining - without the concerns of Mother Nature. Bar service is included. 75 PERSON MINIMUM - 150 PERSON MAXIMUM

## TRADITIONAL MENU

\$36 Per Person

Hamburgers, hot dogs, brats, coleslaw, cookies, potato chips, canned soda, and bottled water

## CHAMPIONS MENU

\$40 Per Person

Hamburgers, chicken breasts, pulled pork, macaroni & cheese coleslaw, cookies, potato chips, canned soda, and bottled water



# DIAMOND AG CORNFIELD DECK

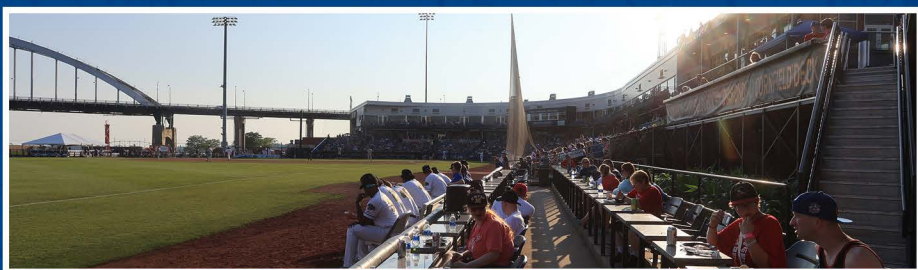
The Cornfield Deck is nestled down the third base line behind the home bullpen. This area is a three-tier deck that includes concourse and field-level seating. The field-level seats swivel and come with granite counter tops. The unique feature of this group area is the real Iowa corn growing right behind the seats.

50 PERSON MINIMUM - 85 PERSON MAXIMUM

## TRADITIONAL MENU

\$34 Per Person

Hamburgers, hot dogs, brats, coleslaw, cookies, potato chips, canned soda, and bottled water





# RIGHT FIELD DECK

The Right Field Deck is located in right-center field, overlooking the Mississippi River. This area comes complete with umbrella-covered cafe tables and a view of America's most famous river.

40 PERSON MINIMUM - 75 PERSON MAXIMUM

## TRADITIONAL MENU

\$33 Per Person

Hamburgers, hot dogs,  
brats, coleslaw, cookies,  
potato chips, canned soda,  
and bottled water



# PEPSI LOGE BOXES

Each Pepsi Loge box accommodates groups up to 15 people.  
Multiple boxes can be combined to accommodate groups of up to 75.

The Pepsi Loge Boxes are located on the concourse  
along the third base line.

10 PERSON MINIMUM - 15 PERSON MAXIMUM / PER BOX



## TICKET & \$20 BANDIT CARD

\$30 Per Person

Bandit cards can be used to purchase  
concessions, merchandise,  
and amusement tickets





# PARTY PLAZA

The Party Plaza is an ideal setting for large groups. The area includes picnic style service, field-level views, and an option for private bar service.

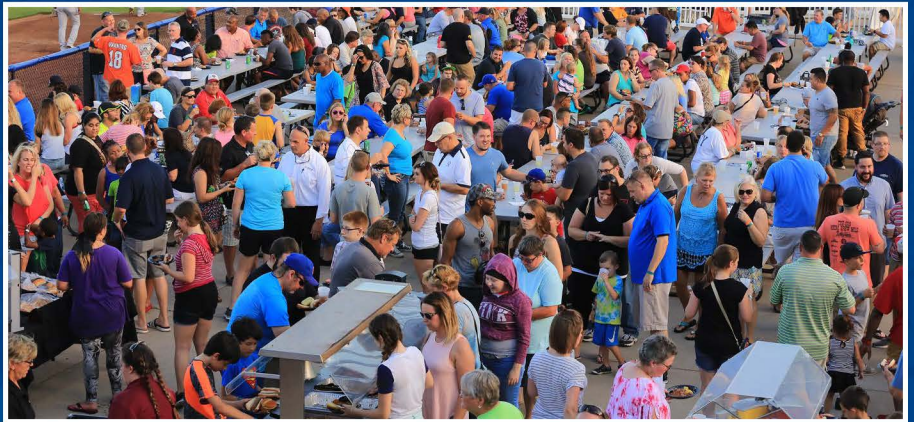
**100 PERSON MINIMUM - 200 EXCLUSIVE - 1000 PERSON MAXIMUM**

## TRADITIONAL MENU

\$33 Per Person w/ GA Seat

\$36 Per Person w/ Box Seat

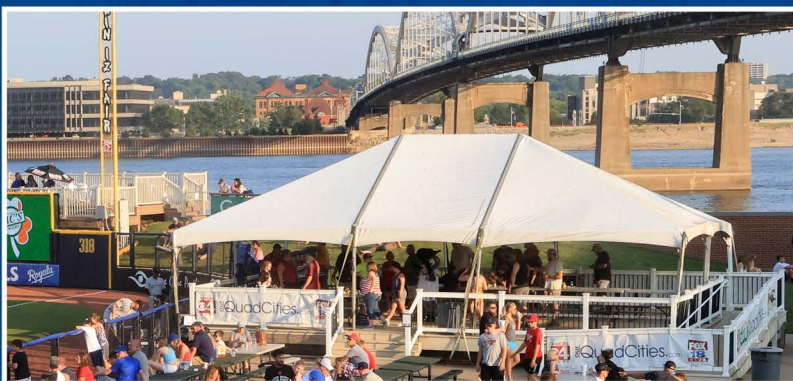
Hamburgers, hot dogs, brats, coleslaw, cookies, potato chips, canned soda, and bottled water



# WHBF BACKYARD DECK

The Backyard Deck is located down the first base line adjacent to the field. This covered tent, with open air sides, offers a great view of the game in an intimate party setting.

**30 PERSON MINIMUM - 50 PERSON MAXIMUM**



## TRADITIONAL MENU

\$33 Per Person

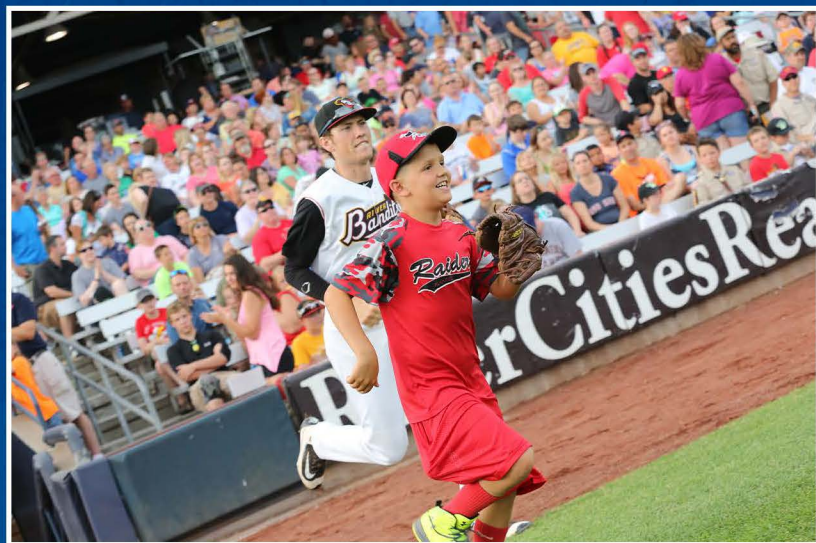
Hamburgers, hot dogs, brats, coleslaw, cookies, potato chips, canned soda, and bottled water



# FIELD OF DREAMS

Field of Dreams is an opportunity for youth sports teams to meet players and stand with them on the field for the national anthem. Each player gets a general admission ticket, Bandits logo baseball and a hot dog, bag of chips, and regular soda.

**\$20 PER PERSON - 10 PERSON MINIMUM**



# BIRTHDAY PACKAGE

The Birthday Package includes a hot dog, bag of chips, regular soda, Bandits logo baseball, dessert, all-you-can-ride wristband, and a general admission ticket for each child. The birthday child gets to throw out a first pitch.

**\$25 PER PERSON - 10 PERSON MINIMUM**







## ADD-ONS

All-You-Can-Ride Wristbands: Sun-Thur \$10 | Fri & Sat \$12

Hot Dog, Bag of Chips, Soda Vouchers: \$8

\*Bandit Cards: \$10 (minimum)

Domestic Kegs: \$400

Premium Kegs: \$500

Hosted Bar: \$500 (minimum)

\*Can be used to purchase concessions, merchandise, and amusement tickets







# 2024 SEASON

## APRIL

SUN	MON	TUE	WED	THU	FRI	SAT
					5 SB 6:30PM	6 SB 6:00PM
7 SB 1:00PM	8	9 @WM	10 @WM	11 @WM	12 @WM	13 @WM
14 @WM	15	16 PEO 6:30PM	17 PEO 6:30PM	18 PEO 6:30PM	19 PEO 6:30PM	20 PEO 6:00PM
21 PEO 1:00PM	22	23 @SB	24 @SB	25 @SB	26 @SB	27 @SB
28 @SB	29	30 @BEL				

## MAY

SUN	MON	TUE	WED	THU	FRI	SAT
			1 @BEL	2 @BEL	3 @BEL	4 @BEL
5 @BEL	6	7 WIS 6:30PM	8 WIS 6:30PM	9 WIS 6:30PM	10 WIS 6:30PM	11 WIS 6:00PM
12 WIS 1:00PM	13	14 @CR	15 @CR	16 @CR	17 @CR	18 @CR
19 @CR	20	21 DAY 6:30PM	22 DAY 6:30PM	23 DAY 6:30PM	24 DAY 6:30PM	25 DAY 6:00PM
26 DAY 6:30PM	27	28 SB 6:30PM	29 SB 6:30PM	30 SB 6:30PM	31 SB 6:30PM	

## JUNE

SUN	MON	TUE	WED	THU	FRI	SAT
						1 SB 6:00PM
2 SB 1:00PM	3	4 @WIS	5 @WIS	6 @WIS	7 @WIS	8 @WIS
9 @WIS	10	11 BEL 6:30PM	12 BEL 6:30PM	13 BEL 6:30PM	14 BEL 6:30PM	15 BEL 6:00PM
16 BEL 1:00PM	17	18 @GL	19 @GL	20 @GL	21 @GL	22 @GL
23 @GL	24	25 @PEO	26 @PEO	27 @PEO	28 @PEO	29 @PEO
30 @PEO						

## JULY

SUN	MON	TUE	WED	THU	FRI	SAT
	1 CR 6:30PM	2 CR 6:30PM	3 CR 6:00PM	4 @CR	5 @CR	6 @CR
7	8	9 PEO 6:30PM	10 PEO 6:30PM	11 PEO 6:30PM	12 PEO 6:30PM	13 PEO 6:00PM
14 PEO 1:00PM	15	16	17	18	19 @SB	20 @SB
21 @SB	22	23 CR 6:30PM	24 CR 6:30PM	25 CR 6:30PM	26 CR 6:30PM	27 CR 6:00PM
28 CR 1:00PM	29	30 @PEO	31 @PEO			

## AUGUST

SUN	MON	TUE	WED	THU	FRI	SAT
				1 @PEO	2 @PEO	3 @PEO
4 @PEO	5	6 WIS 6:30PM	7 WIS 6:30PM	8 WIS 6:30PM	9 WIS 6:30PM	10 WIS 6:00PM
11 WIS 1:00PM	12	13 @BEL	14 @BEL	15 @BEL	16 @BEL	17 @BEL
18 @BEL	19	20 LAN 6:30PM	21 LAN 6:30PM	22 LAN 6:30PM	23 LAN 6:30PM	24 LAN 6:00PM
25 LAN 1:00PM	26	27 @WIS	28 @WIS	29 @WIS	30 @WIS	31 @WIS

## SEPTEMBER

SUN	MON	TUE	WED	THU	FRI	SAT
1 @WIS	2	3 BEL 6:30PM	4 BEL 6:30PM	5 BEL 6:30PM	6 BEL 6:30PM	7 BEL 6:00PM
8 BEL 1:00PM						

HOME

AWAY

### MIDWEST LEAGUE WEST

QC - Quad Cities River Bandits (KC)  
BEL - Beloit Sky Carp (MIA)  
CR - Cedar Rapids Kernels (MIN)  
PEO - Peoria Chiefs (STL)  
SB - South Bend Cubs (CHI-N)  
WIS - Wisconsin Timber Rattlers (MIL)

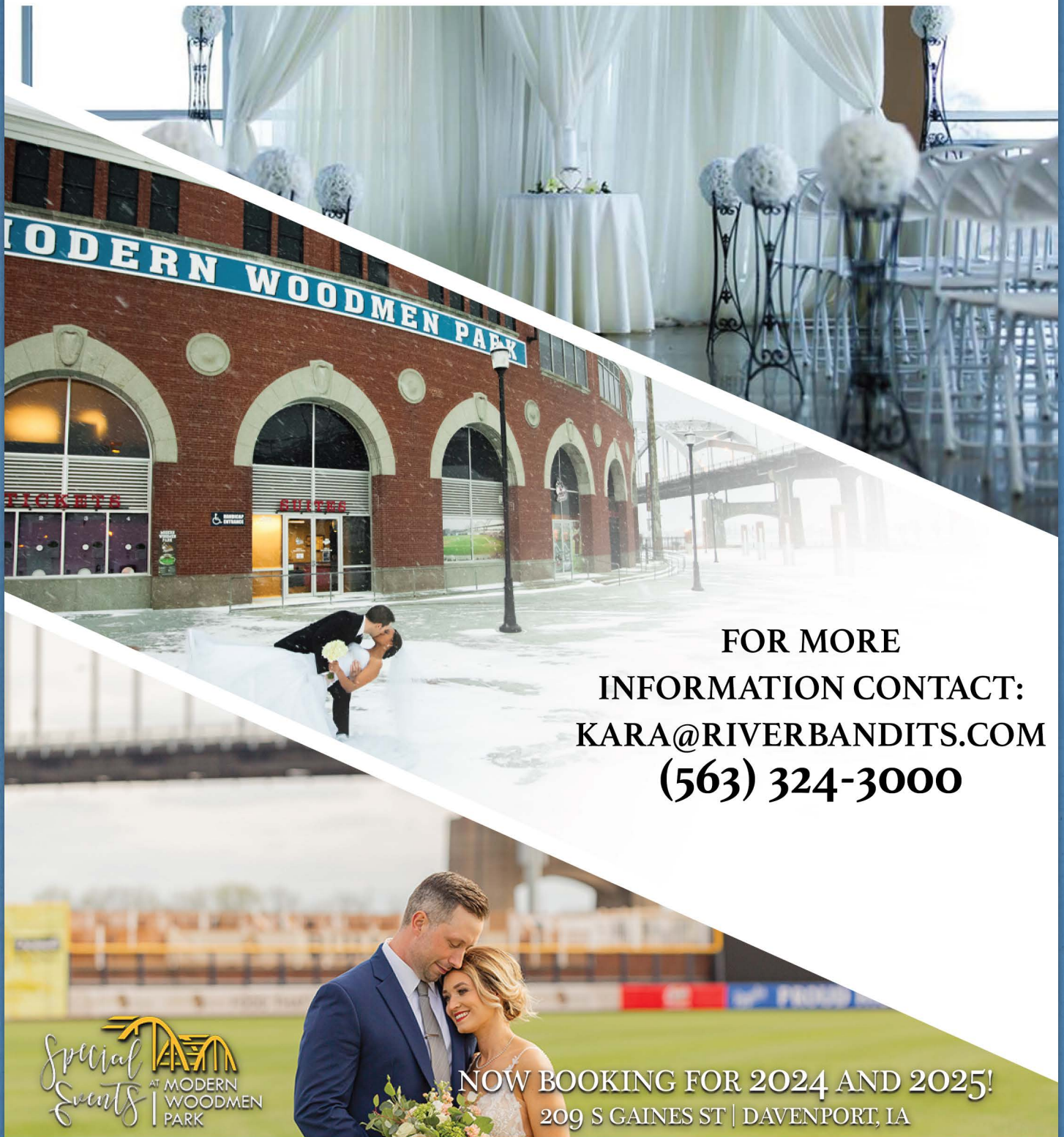
### MIDWEST LEAGUE EAST

DAY - Dayton Dragons (CIN)  
FW - Fort Wayne TinCaps (SD)  
GL - Great Lakes Loons (LA-N)  
LC - Lake County Captains (CLE)  
LAN - Lansing Lugnuts (OAK)  
WM - West Michigan Whitecaps (DET)



# SPECIAL EVENTS AT MODERN WOODMEN PARK

CEREMONIES | RECEPTIONS | REHEARSAL DINNERS



FOR MORE  
INFORMATION CONTACT:  
[KARA@RIVERBANDITS.COM](mailto:KARA@RIVERBANDITS.COM)  
(563) 324-3000

Special Events  AT MODERN WOODMEN PARK

NOW BOOKING FOR 2024 AND 2025!  
209 S GAINES ST | DAVENPORT, IA