

# 2024

*Wisconsin Timber Rattlers*  
SUMMER OUTING GUIDE



High-A Affiliate of the Milwaukee Brewers®



# 2024 SCHEDULE

## APRIL

SUN	MON	TUE	WED	THU	FRI	SAT
	1	2	3	4	5 PEO 6:40	6 PEO 1:10
7 PEO 1:10	8 OFF	9 SB 6:05	10 SB 6:05	11 SB 6:05	12 SB 6:05	13 SB 3:05
14 SB 1:05	15 OFF	16 CR 6:40	17 CR 12:10	18 CR 6:40	19 CR 6:40	20 CR 1:10
21 CR 1:10	22 OFF	23 PEO 6:05	24 PEO 11:05	25 PEO 6:35	26 PEO 7:05	27 PEO 7:05
28 PEO 2:05	29 OFF	30 GL 6:40				

## MAY

SUN	MON	TUE	WED	THU	FRI	SAT
			1 GL 12:10	2 GL 6:40	3 GL 6:40	4 GL 1:10
5 GL 1:10	6 OFF	7 QC 6:30	8 QC 6:30	9 QC 6:30	10 QC 6:30	11 QC 6:00
12 QC 1:00	13 OFF	14 BEL 6:40	15 BEL 12:10	16 BEL 6:40	17 BEL 6:40	18 BEL 1:10
19 BEL 1:10	20 OFF	21 SB 5:05	22 SB 10:05	23 SB 6:05	24 SB 6:05	25 SB 3:05
26 SB 6:05	27 OFF	28 FW 6:40	29 FW 12:10	30 FW 6:40	31 FW 6:40	

## JUNE

SUN	MON	TUE	WED	THU	FRI	SAT
						1 FW 6:40
2 FW 1:10	3 OFF	4 QC 6:40	5 QC 12:10	6 QC 6:40	7 QC 6:40	8 QC 6:40
9 QC 1:10	10 OFF	11 WM 5:35	12 WM 5:35	13 WM 5:35	14 WM 5:35	15 WM 6:05
16 WM 1:00	17 OFF	18 FW 6:05	19 FW 6:05	20 FW 6:05	21 FW 6:05	22 FW 5:35
23 FW 12:05	24 OFF	25 SB 6:40	26 SB 12:10	27 SB 6:40	28 SB 6:40	29 SB 6:40
30 SB 1:10						

## JULY

SUN	MON	TUE	WED	THU	FRI	SAT
	1 BEL 6:35	2 BEL 6:35	3 BEL 6:35	4 BEL 6:40	5 BEL 6:40	6 BEL 6:40
7 OFF	8 OFF	9 WM 6:40	10 WM 12:10	11 WM 6:40	12 WM 6:40	13 WM 6:40
14 WM 1:10	MAJOR LEAGUE ALL-STAR BREAK			18 CR 6:35	19 CR 6:35	20 CR 6:35
21 CR 1:05	22 OFF	23 BEL 6:35	24 BEL 6:35	25 BEL 6:35	26 BEL 6:35	27 BEL 6:35
28 BEL 1:05	29 OFF	30 SB 6:40	31 SB 12:10			

## AUGUST

SUN	MON	TUE	WED	THU	FRI	SAT
				1 SB 6:40	2 SB 6:40	3 SB 6:40
4 SB 1:10	5 OFF	6 QC 6:30	7 QC 6:30	8 QC 6:30	9 QC 6:30	10 QC 6:30
11 QC 1:00	12 OFF	13 PEO 6:40	14 PEO 12:10	15 PEO 6:40	16 PEO 6:40	17 PEO 6:40
18 PEO 1:10	19 OFF	20 GL 6:05	21 GL 6:05	22 GL 6:05	23 GL 6:05	24 GL 6:05
25 GL 12:05	26 OFF	27 QC 6:40	28 QC 12:10	29 QC 6:40	30 QC 6:40	31 QC 6:40

## SEPTEMBER

SUN	MON	TUE	WED	THU	FRI	SAT
1 QC 1:10	2 OFF	3 CR 6:35	4 CR 6:35	5 CR 6:35	6 CR 6:35	7 CR 6:35
8 CR 1:05						

ALL GAMES ARE SUBJECT TO CHANGE



HOME



ROAD

### WEST DIVISION

- BEL - BELOIT SKY CARP (MARLINS)
- CR - CEDAR RAPIDS KERNELS (TWINS)
- PEO - PEORIA CHIEFS (CARDINALS)
- SB - SOUTH BEND CUBS (CUBS)
- QC - QUAD CITIES RIVER BANDITS (ROYALS)
- WIS - WISCONSIN TIMBER RATTLERS (BREWERS)

### EAST DIVISION

- DAY - DAYTON DRAGONS (REDS)
- FW - FORT WAYNE TINCAPS (PADRES)
- GL - GREAT LAKES LOONS (ODOERS)
- LC - LAKE COUNTY CAPTAINS (INDIANS)
- LAN - LANSING LUIGNITS (BLUE JAYS)
- WM - WEST MICHIGAN WHITECAPS (TIGERS)

BANG FOR YOUR BUCK

CRAFT BREWS & BRATS

GIVEAWAYS

FIREWORKS

# IT'S BETTER at the Ballpark



## CONTENTS

2024 Schedule .....	1
Contents .....	2
Business Memberships .....	3
All-You-Can-Eat Club Buffet Add-On .....	4
Left Field Suites .....	5
Johnson Financial Group Diamond Seats .....	6
North Star Mohican Party Deck .....	7-8
Fox Communities Fox Club .....	9-10
Miller Lite Home Run Porch .....	11-12
TLC Sign Picnic Pavilion .....	13-14
All-You-Can-Eat Seats .....	15
Leinie Lodge .....	16
VIP Luxury Suites .....	17
Suite Combo Add-On's .....	18

## PRICING

### FOR GROUPS OF 20 OR MORE

Field Level Box Seats	Regular price \$17 .....	<b>\$14</b>
Reserved Bleacher Seats	Regular price \$14 .....	<b>\$11</b>
Grass Seats	Regular price \$10 .....	<b>\$7</b>
Add Brown Bag Voucher	[Hot Dog, Chips, Soda] .....	<b>\$7</b>



# BUSINESS MEMBERSHIPS

Our Business Memberships are specially designed for Fox Valley companies. Use the fun of Timber Rattlers baseball to strengthen relationships, reward employees, and impress any VIP. Make our lineup your best out-of-office business tool, all to help your bottom line.

## WHAT'S INCLUDED?



**BANK OF 264 TICKETS**  
(All 66 Home Games)



**YOUR LOGO DISPLAYED**  
on the Videoboard before each game



**1 FREE VIP SUITE**  
(to any April or May Home Game)



**ACCESS TO MEETING SPACE** in the Ballpark



**TICKET EXCHANGE PROGRAM:** Exchange tickets in advance for any other 2024 Home Game



**ADDITIONAL TICKETS FOR APRIL GAMES**  
use as a group or individually



**MERCH DISCOUNT:** 15% OFF in the Snake Pit Team Store



**EVENTS & PRE-SALES**  
Happy hours, concerts, non-baseball events at the stadium

**4 BOX SEATS** Get closer to the action! Theater style seats with armrests, a cupholder, and access to Fox Club.

Full season \$3,300 /yr  
or \$550 /month (March-August)

**1 PATIO TABLE** Relax atop a tiered patio that overlooks the field with personal wait service throughout the game (includes 4 seats).

Full season \$4,450 /yr  
or \$742 /month (March-August)

**4 CLUB LEVEL SEATS** Reserved padded seats just outside the Fox Club Level. Access to upscale food and beverage.

Full season \$4,900 /yr  
or \$817 /month (March-August)

**4 A.Y.C.E. SEATS** Bar top seating with an all-you-can-eat buffet and 2 drinks.

Full season \$6,900 /yr  
or \$1,150 /month (March-August)

# ALL-YOU-CAN-EAT

## Club Level Buffet *ADD ON*

### SAMPLE OF CHEF'S CHOICE BUFFET MENU

*[Meal served at game time for 90-minutes]*

#### **HOT SLIDER ENTRÉE:**

**Examples** - Fried chicken slider, pulled chicken, beef or chicken tacos, assorted sausages.

#### **HOT SIDE DISH:**

**Examples** - Mac and cheese, waffle fries, potato wedges.

#### **HOT APPETIZER:**

**Examples** - Wings, egg rolls, cheese curds, onion rings.

#### **HOT BALLPARK ENTRÉE:**

**Examples** - Hot dog, brat, pulled pork, or burger.

#### **CHIPS & DIP:**

**Examples** - Beer dip and pretzels, French onion dip with chippers, or chips and salsa.

#### **FRUIT & VEGGIE TRAY:**

Fresh fruit or vegetables with dill dip.

#### **COLD TRAY:**

Cheese & sausage tray w/ crackers.

#### **ASSORTED DESSERTS:**

**Examples** - Cookies, brownies, bars, mini desserts, or cakes.

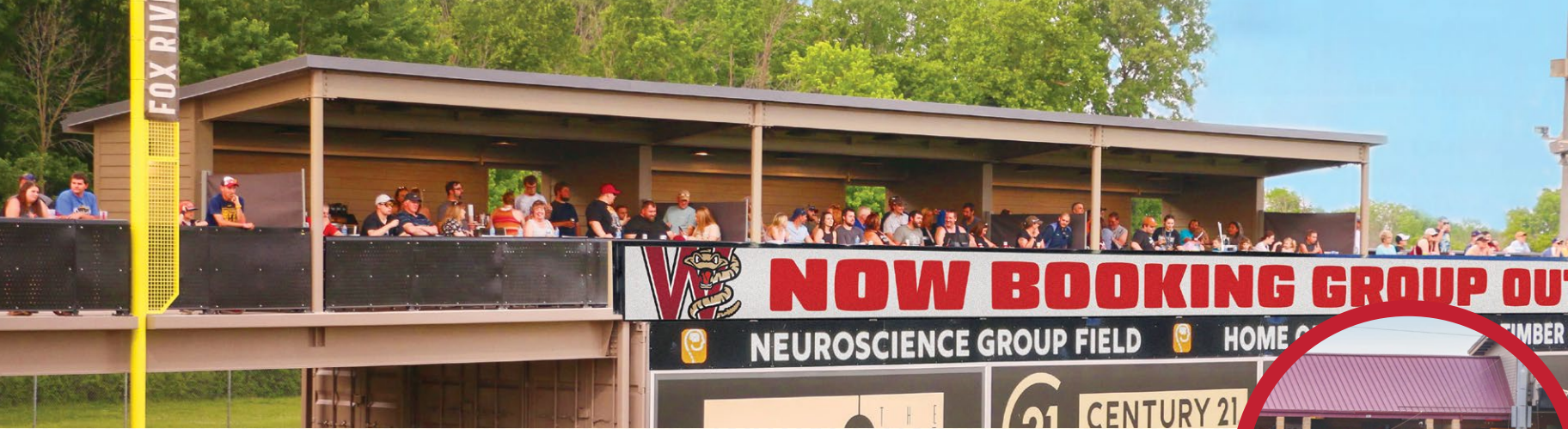
*Only*  
**\$25**

**ADD ON  
TO ANY  
TICKET**



Each menu option includes two beverages per person  
*[Hard Seltzer, Rail Mixer, 16 oz. Beer, Soda, or Water]*





# LEFT FIELD Suites

Located above the left field wall sit three unique outdoor suites that are great for large and small groups. Each Outdoor Suite accommodates 20 people with the ability to open and host groups of up to 60. The left field suites feature tables, bar stool seating, TVs, food & drinks, and access to the new 360-degree walkway around the ballpark. Network, socialize, and enjoy the game from this new area!



## BATTER UP

BBQ Pulled Pork  
Boneless Wings  
Creamy Mac & Cheese  
Kettle Chips w/Rattler Ale Dip  
Ballpark Snack Mix  
Dessert Platter



## ON DECK

Grilled Hamburgers  
Cher-Make Hot Dogs  
Creamy Mac & Cheese  
Kettle Chips w/ Rattler Ale Dip  
Ballpark Snack Mix  
Dessert Platter



## CLEAN UP HITTER

Grilled Chicken Breasts  
Grilled Cher-Make Brats  
Creamy Mac & Cheese  
Kettle Chips w/Rattler Ale Dip  
Ballpark Snack Mix  
Dessert Platter

**\$1,200 PER SUITE**

Includes 20 Tickets  
and 5 Parking Passes.  
All Menus feed 20.

**\$60 per Additional Ticket**  
**Maximum of five (5)**

*Beverages: Fridge will be stocked with 60 drinks of your choosing from the Beverage Order Form*



PRESENTED BY  
**JOHNSON**  
FINANCIAL GROUP®

# DIAMOND *Seats*

Located directly behind home plate; the Diamond Seats feature seating for up to 68, including an all-you-can-eat picnic buffet with a great view of the whole field. This is the perfect space to treat clients, prospects, and valued employees or your next family night out!

## DIAMOND SEATS MENU

*Meal is served at game time and runs for 90-minutes*

- BBQ Pulled Pork
- Grilled Cher-Make Hot Dogs
- Creamy Mac & Cheese
- Potato Chips
- Assorted Dessert Tray

## BUILD YOUR OWN BURRITO BOWL

- Spicy Beef
- Black Beans & Corn
- Cilantro Lime Rice
- Sour Cream
- Tortilla Strips
- Lettuce
- Salsa
- Shredded Cheese

*Menu includes two beverages per person.  
Hard Seltzer, Domestic Beer, Soda, or Water.*

## \$45 PER TICKET

Includes Game Ticket  
& All-You-Can-Eat Buffet  
**Seats Up To 68**

**3 Cabanas**  
*for shade & comfort*







# PARTY Deck

Located beyond the right field wall, the Party Deck features bistro tables, comfortable patio furniture surrounded by three cabanas for shade & comfort. An 80-foot drink rail sits along the outfield wall with an all-you-can-eat buffet. Enjoy the game from a great right field view!

## ALL-YOU-CAN-EAT MENU

*Meal is served at game time and runs for 90-minutes*

**\$2,250 | 50 TICKETS**

Includes Game Ticket  
& All-You-Can-Eat Buffet

**Additional Tickets \$45 each**

### GRAND SLAM

- BBQ Pulled Pork
- Rotisserie Grilled Chicken Breasts
- Creamy Mac & Cheese
- Potato Chips
- Homemade Coleslaw
- Watermelon Slices
- Assorted Dessert Tray



### LEADOFF HITTER

- Cher-Make Hot Dogs
- Grilled Cher-Make Brats
- Grilled Hamburgers
- Cowboy Baked Beans
- Homemade Pasta Salad
- Potato Chips
- Assorted Dessert Tray



### FIESTA

- Seasoned Pulled Pork
- Enchilada Chicken
- Soft Taco Shells & White Tortilla Chips
- White Queso
- Guacamole, Salsa, Pico de Gallo & Fiesta Com
- Shredded Lettuce & Sliced Jalapenos
- Churros



*Menu includes two beverages per person. Hard Seltzer, Rail Mixer, 16 oz. Beer, Soda, or Water.*



***On game days with nice weather,  
The Fox Club windows have the  
ability to open up.***



# The FOX CLUB



This premier area of the ballpark is the ideal setting for your next company outing or client entertainment event! The Fox Club, located on the exclusive upper deck, can accommodate 20 to 175 guests and includes a full bar, upscale food options, and indoor climate-controlled viewing.

## FOX CLUB PICNIC MENU

*Meal is served pre-game at gates open and runs for 90-minutes*

### LEADOFF HITTER

- Cher-Make Hot Dogs
- Grilled Cher-Make Brats
- Grilled Hamburgers w/ WI Cheese & LTO
- Cowboy Baked Beans
- Homemade Pasta Salad
- Homemade Kettle Chips
- Assorted Dessert Tray



**w/ Field Level Box Seat**  
**\$34 ADULT | \$29 CHILD**

### DOUBLE PLAY

- Grilled Chicken Breasts
- BBQ Pulled Pork
- Cher-Make Hot Dogs
- Homemade Coleslaw
- Buttered Kernel Corn
- Homemade Kettle Chips
- Assorted Dessert Tray



**w/ Field Level Box Seat**  
**\$36 ADULT | \$31 CHILD**

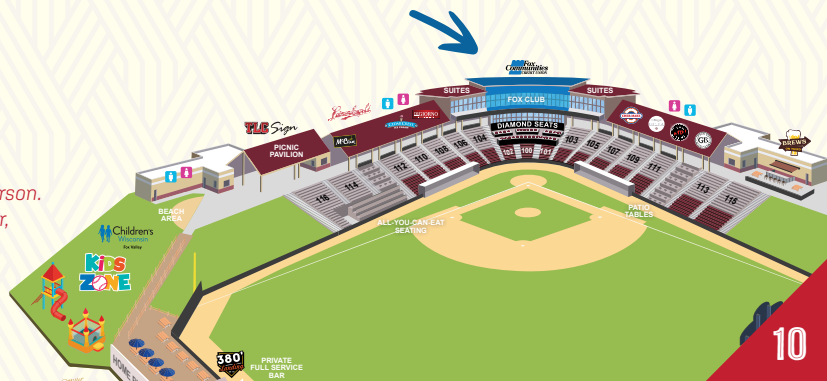
### GRAND SLAM

- BBQ Pork Ribs
- Roisserie Grilled Chicken Breasts
- Homemade Coleslaw
- Creamy Mac & Cheese
- Homemade Kettle Chips
- Assorted Dessert Tray

**w/ Field Level Box Seat**  
**\$39 ADULT | \$34 CHILD**



*Menu includes two beverages per person.  
 Hard Seltzer, 16 oz. Domestic Beer,  
 Soda, or Water.*



**Stadium Box Seats After Your Picnic!**

**Full Service Bar**  
*at your picnic!*





# HOME RUN Porch

The Home Run Porch accommodates anywhere from 20 to 200 guests and is one of our most popular group areas. This space is perfect for company outings, entertaining clients, or family get-togethers. Enjoy an all-you-can-eat buffet with plenty of space to mingle amongst friends and family.

## MENU

- Grilled Hamburgers
- BBQ Pulled Pork
- Cher-Make Hot Dogs
- Cowboy Baked Beans
- Homemade Pasta Salad
- Potato Chips
- Assorted Dessert Tray

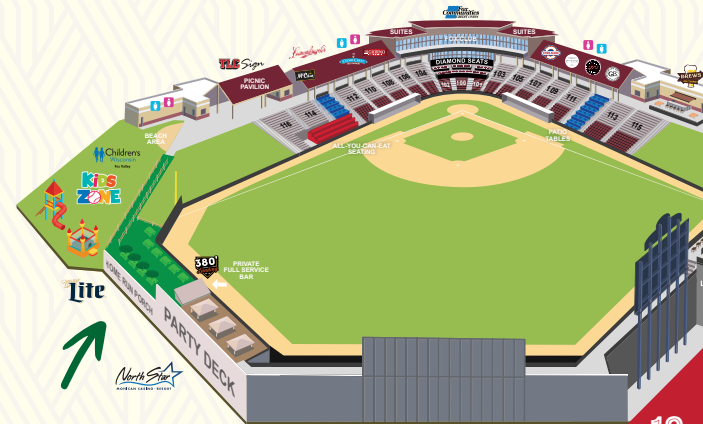


Menu includes two beverages per person.  
Hard Seltzer, 16 oz. Domestic Beer,  
Soda, or Water.

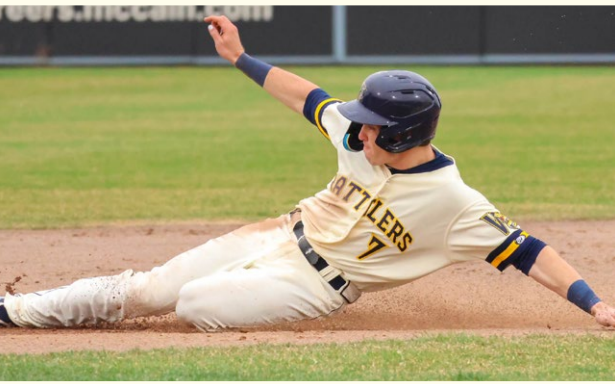


**MEAL SERVED  
AT GAME TIME**  
and runs for 90-minutes

**\$31 ADULT | \$26 CHILD**



## Meals Served *Pre-Game or In-Game*



# Picnic PAVILION

PRESENTED BY

**TLC Sign**

Celebrate a special occasion, entertain clients or say "thank you" to your employees. Enjoy great food in a great atmosphere while we take care of all the arrangements. This covered picnic area seats anywhere from 20 to 300 guests and is located along the 1st baseline.

## PICNIC PAVILION MENU

Meal can be served either pre-game or 20-minutes after the start of the game and runs for 90-minutes.

### LEADOFF HITTER

- Cher-Make Hot Dogs
- Grilled Cher-Make Brats
- Grilled Hamburgers
- Cowboy Baked Beans
- Homemade Pasta Salad
- Potato Chips
- Assorted Dessert Tray

**w/ Reserved Bleacher Seat**  
**\$27 ADULT | \$22 CHILD**

**w/ Field Level Box Seat**  
**\$30 ADULT | \$25 CHILD**

### DOUBLE PLAY

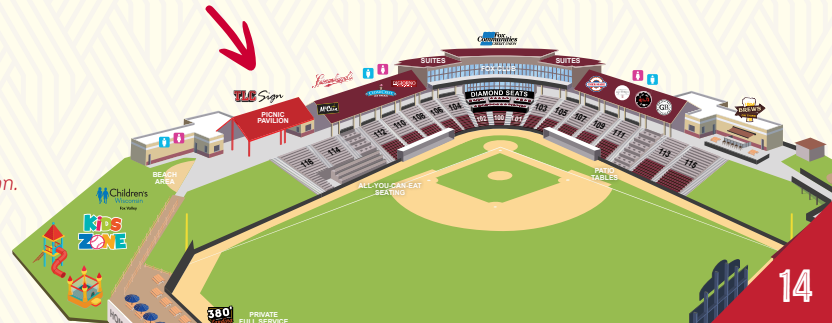
- Grilled Chicken Breasts
- BBQ Pulled Pork
- Cher-Make Hot Dogs
- Homemade Coleslaw
- Buttered Kernel Corn
- Homemade Kettle Chips
- Assorted Dessert Tray

**w/ Reserved Bleacher Seat**  
**\$29 ADULT | \$24 CHILD**

**w/ Field Level Box Seat**  
**\$32 ADULT | \$27 CHILD**



Menu includes two beverages per person.  
 Hard Seltzer, 16 oz. Domestic Beer,  
 Soda, or Water.



**Stadium Seating With Your Picnic!**



Watch out for **FOUL BALLS & FLYING BRATS!**

# ALL-YOU-CAN-EAT *Seats*

Sit ON TOP of the ACTION with All-You-Can-Eat seats! Featuring 69 bar top seats with a field level view along the 1st base side and a food buffet close by. This popular area is great for groups and individuals. You have the convenience of sitting back or standing up to mingle with friends.



*Menu includes two beverages per person.  
Hard Seltzer, Domestic Beer, Soda, or Water.*

## **LEADOFF HITTER**

- Cher-Make Hot Dogs
- Grilled Cher-Make Brats
- Grilled Hamburgers
- Cowboy Baked Beans
- Homemade Pasta Salad
- Potato Chips
- Assorted Dessert Tray



**\$33 PER TICKET** PLUS TAX

Includes Game Ticket  
& All-You-Can-Eat Buffet  
**Seats Up To 69 Guests**





# LEINIE Lodge

*The Perfect Place for*  
**PRIVATE MEETINGS  
 HAPPY HOUR &  
 CASUAL EVENTS**

Have your next company outing or family get-together in the Leinie Lodge. This area features a full-service bar, flat screen cable TV's, and two unique food menus to choose from. This group area is climate controlled and located on the 1st base concourse. The Leinie Lodge holds several tables and bar stools to accommodate up to 50 guests.

## LEINIE LODGE MENU

*Meal served pre-game when the gates open and runs for 90-minutes*

### LEADOFF HITTER

- Cher-Make Hot Dogs
- Grilled Cher-Make Brats
- Grilled Hamburgers w/ Cheese & LTO
- Cowboy Baked Beans
- Homemade Pasta Salad
- Potato Chips
- Assorted Dessert Tray

**w/ Field Level Box Seat**  
**\$33 ADULT | \$28 CHILD**



### DOUBLE PLAY

- Grilled Chicken Breasts w/ Cheese & LTO
- BBQ Pulled Pork
- Cher-Make Hot Dogs
- Homemade Coleslaw
- Buttered Kernel Corn
- Potato Chips
- Assorted Dessert Tray

**w/ Field Level Box Seat**  
**\$35 ADULT | \$30 CHILD**



*Menu includes two beverages per person. Hard Seltzer, 16 oz. Beer, Soda, or Water*



# VIP LUXURY Suites

## SUITE INCLUDES:

- 14 Tickets
- Climate-controlled
- Fully furnished indoor seating
- Private outdoor seating
- Waitstaff service
- Flat screen TV's

## PARKING PERK:

- 3 VIP Parking Passes

**ONLY \$490** PLUS TAX

**\$35 per Additional Ticket**  
Maximum of six (6)

VIP Luxury Suites are an elegant way to entertain clients and make a lasting impression on your employees and friends. Neuroscience Group Field at Fox Cities Stadium features six VIP suites located behind home plate on the Club Level. Suite holders can pre-order food and beverages from the Suite Menu. All suites have waitstaff service to take orders during the game.

## Special Pricing for Season Tickets

Quarter Season • Half Season  
Full Season





# SUITE COMBOS

*Add a Premium Menu Selection to Your Suite Experience!*



## OUR MOST POPULAR COMBOS ARE:

### TRIPLE PLAY

- 7-Grilled Hot Dogs
- 7-Grilled Brats
- 7-1/3 lb. Hamburgers
- Gardetto's
- Fench Onion Dip
- Homemade Kettle Chips
- Cheese and Fixing Trays
- Dessert Platter

### FOWL POLE

- Build-Your-Own-Fajitas
- Nacho Bar w/ Beef & Chicken
- Garden Fresh Salsa
- Layered Taco Dip
- White Torilla Chips
- Fresh Fruit Tray
- Dessert Platter

### FIELDER'S CHOICE

- 7-Grilled 1/3 lb. Hamburgers
- 7-Grilled Chicken Breasts
- Chicken Caesar Salad
- Fresh Vegetable Tray
- Bottomless Popcorn
- Cheese and Fixings Tray
- Dessert Platter

**COMBOS serve about 14 people, does not include beverages: \$200 PER COMBO**

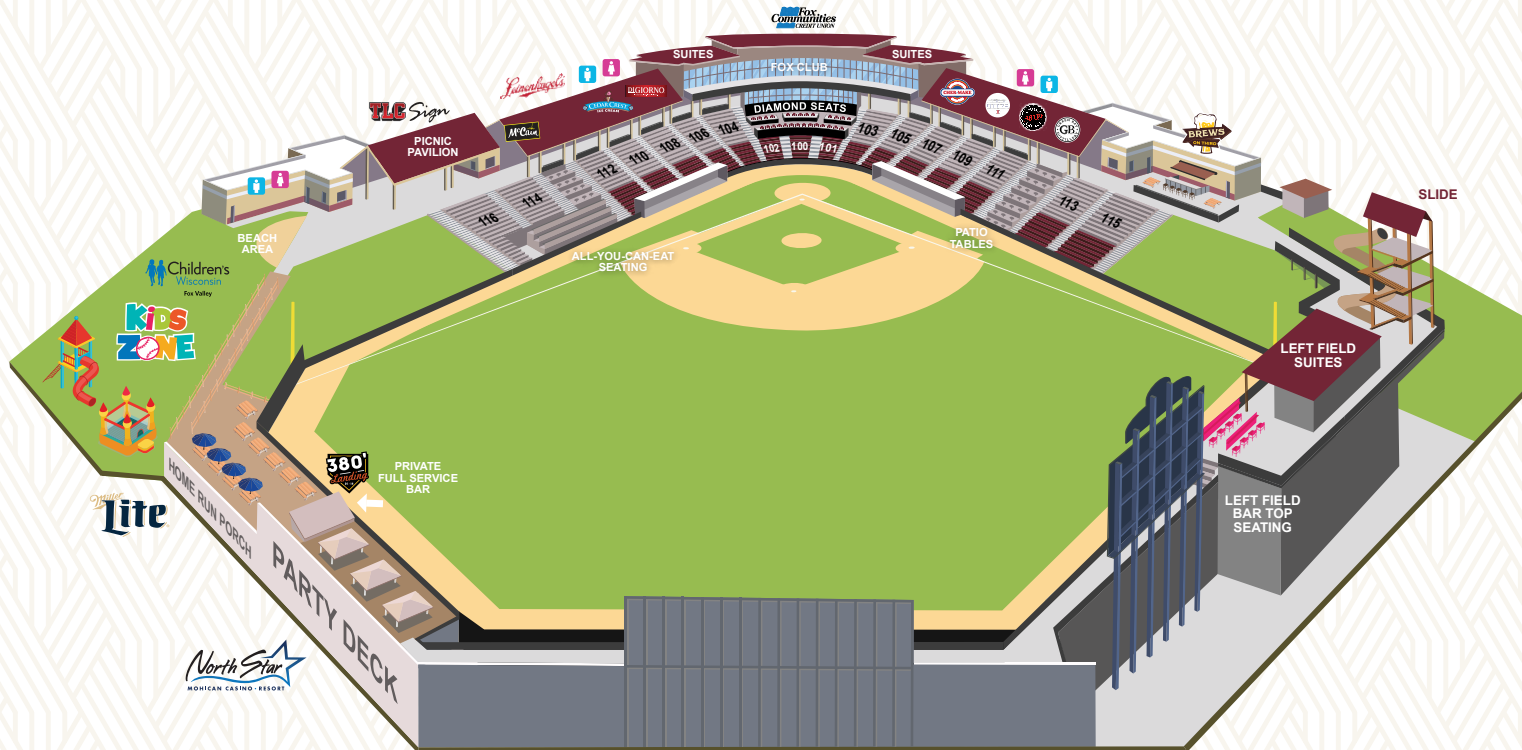
### Or Add Our All-You-Can-Eat Chef's Choice Buffet.

[Served in Club Area]

- Chips & Dip
- Hot Slider Entrée
- Hot Appetizer
- Cold Tray
- Hot Side Dish
- Hot Ballpark Entrée
- Assorted Desserts
- 2 drink tickets: Hard Seltzer, 16 oz. Beer,  
Rail Mixers, Soda, or Water

**\$350 for all 14 people**

[See page 4 for menu samples]



*Contact Us!*  
**TO CHECK GROUP AREA  
 AVAILABILITY TODAY**

**Call or Text "GROUP"  
 to 920-733-4152**

*Group Outings*

**AVAILABLE NOW**

**TIMBERRATTLERS.COM**

*Opening Night*

**FRIDAY, APRIL 5th**

**6:40 PM**