



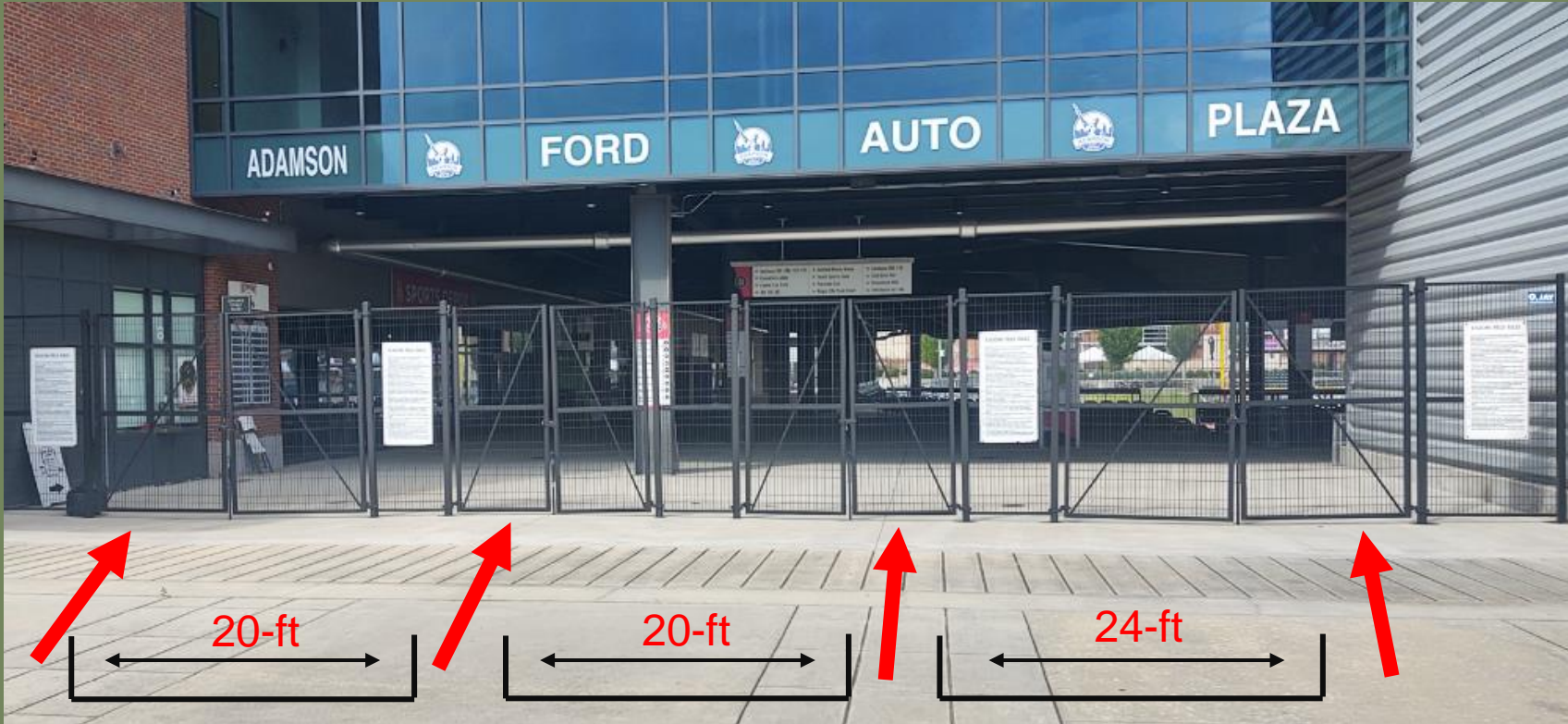
Regions Field 2020 Event Hosting Plan

Purpose

With the re-opening of Regions Field our intent is to provide a fun, family atmosphere in a safe environment. Through a reduced capacity with social distancing boundaries our patrons can take comfort in knowing that the Birmingham Barons have committed to their safety at all times. Limiting physical contact points with guests and educating our staff so they are aware of all our operational plans along with the endorsement and cooperation of the Jefferson County Department of Health and the City of Birmingham we are pleased to provide the enclosed facility plan.

-Birmingham Barons Management

Guest Entry into Regions Field



Four (4) entrance gates will be provided at the Main Entry Plaza, each separated by at least 20 feet to either side of the next entrance way.

- Barons personnel with facial coverings greet fans in plaza
- Guests proceed through one of four (4) designated entry points.
- Entry ways are separated by at least 20-feet.
- Guest lines are marked by 6-foot indicators to maintain social distance upon entry to Regions Field
- Tickets are scanned by Barons personnel.
- Directional signage accompanies staff interaction to make sure the process is a smooth flow for guests.
- Patron health question signage is posted at entries as a guest guideline.
- Guests are required to wear facial coverings for entry to events held at Regions Field.
- Hand Sanitizer located in Main Entry Plaza for guest usage.

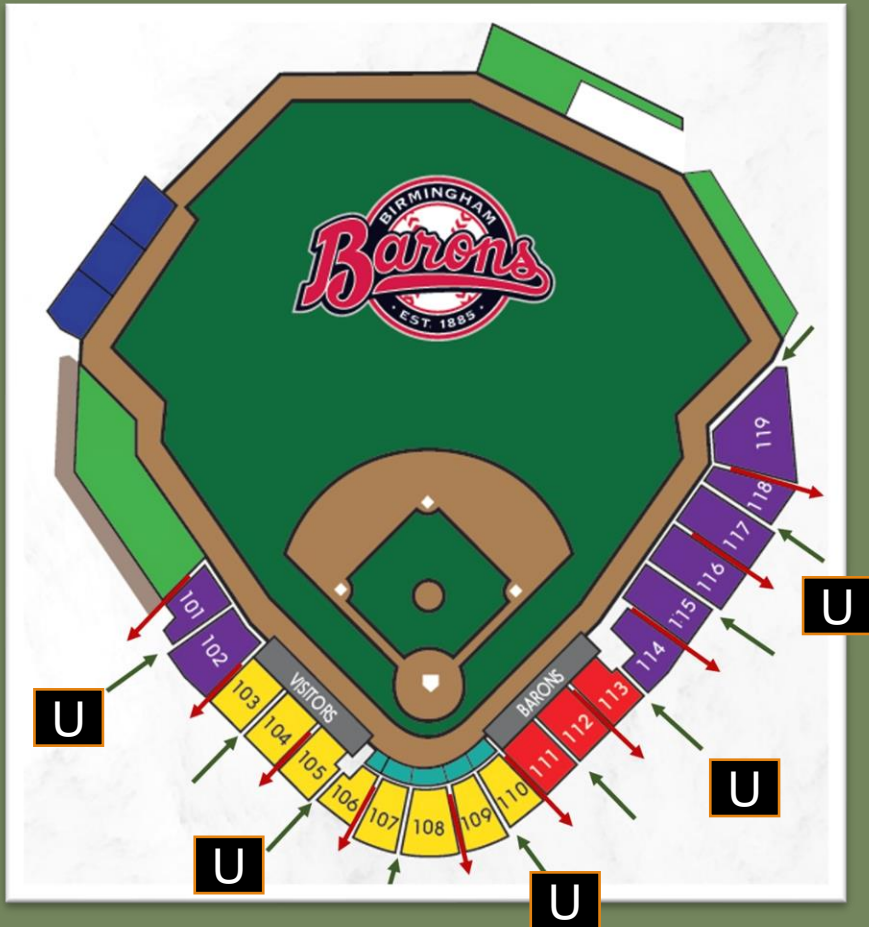
Box Office Ticket Pick Up

For ticketed events at Regions Field lines will be spaced out by utilizing only 3 of the 5 ticket windows of the box office. These will feature at least 10 feet of space between queuing lines and those in the same queuing line will be spaced 6 feet apart similar to the entry gates. Open lines and spacing of lines will be clearly marked and accompanied by signage and Barons personnel to assure that guests enter Regions Field in adherence to our guidelines.

Barons personnel will all wear facial coverings, hand sanitizers are located in Main Entry Plaza and Patron Health Guideline signage is located in easy visibility of guests.



Capacity and Spacing






- Maximum capacity of Regions Field for 2020 Events will be reduced from 8,500 to 3,139 guests.
- Social Distancing in seating bowl, suite level, club level, group areas and on-field seating
- Restroom Access will feature controlled ingress and egress
- One way traffic lanes into and out of all seating areas
- Orderly guest purchasing at all concession or merchandise kiosks
- Orderly exit upon the ending of each event at Regions Field

Stadium Areas Closed

- Right Field Bleachers
- Ballpark Berms (grassy areas)
- Playgrounds and Batting Cages

LEGEND

-  Exit from seating section
-  Entrance to seating section
-  Usher Location

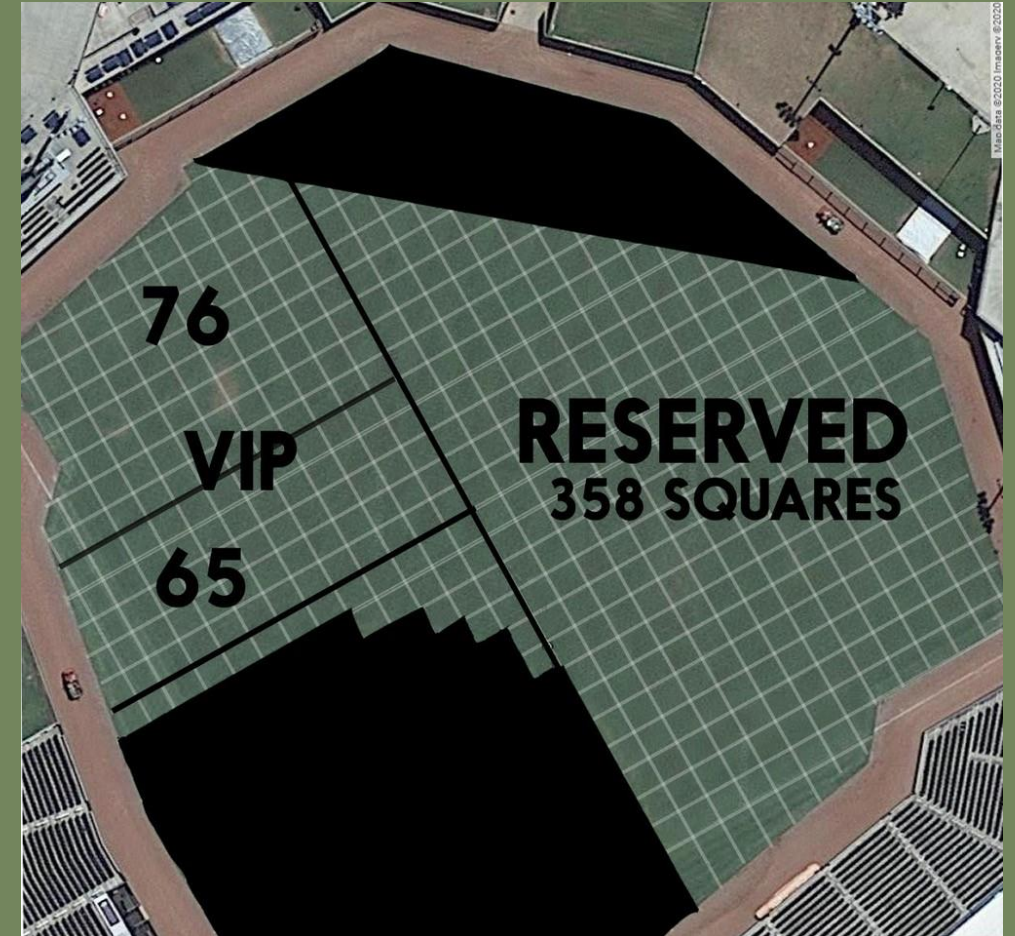
Capacity Variation: On-Field Seating

Most all events held at Regions Field will reflect normal baseball seating. However, for a select number of events we'll utilize the playing field for close proximity to our video board (movies) and this field plan is represented at right. Each square is a 10' x 10' space that can accommodate up to five (5) people from the same family/group.

Specifics:

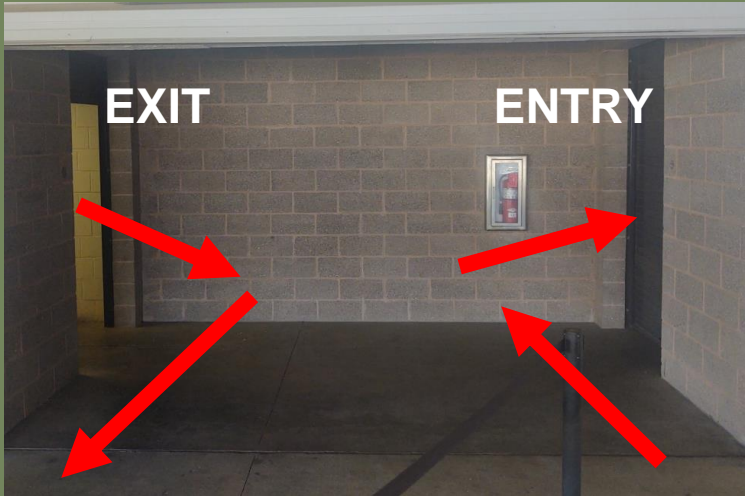
- Squares are separated by at least 10' for social distance with most having 15' of spacing. A maximum of 32 out of 76 squares in VIP 1 and 25 of 65 squares in VIP II will be utilized. For Reserved a maximum of 60 out of 358 squares will be used.
- Each side of the playing field (first base and third base) will feature a dedicated entry and exit aisle.
- Signage and Barons personnel will direct guests on the appropriate path to take. Guests that utilize on-field seating will have instructions for safe entry/exit prior to event so there are no surprises.

ON-FIELD MAXIMUM CAPACITY REVISED			
SECTION	CAPACITY		NEW Max Capacity
VIP I	380		160
VIP II	325		140
Reserved	1,790		300
	2,495		600



Restroom Operation

The restrooms at Regions Field will follow a strict entry/exit path along with socially distanced queuing lines with spaced out urinals and sinks. The bathroom stalls are partitioned for guest protection. Hand sanitizer's are placed in each facility and Barons personnel will routinely inspect and sanitize restrooms throughout the events. Signage and floor markings will be conspicuously placed throughout all restroom facilities. Restroom attendants will monitor each restroom throughout the events.



Men's Room (1st Base Concourse)



Men's Room Urinals (1st Base Concourse)



Men's Sinks (1st Base Concourse)



Women's Restroom (3rd Base Concourse)



Women's Toilets (3rd Base Concourse)



Women's Sinks (3rd Base Concourse)

Concessions Operation



Standard Concession Stand setup with socially distanced line queuing and spacing between registers (First Base Concession shown)

There are several traditional concession stands that will operate during Regions Field Events. These would all operate under the same premise with distance between guests and Barons personnel. Staff will be required to wear facemasks and gloves at all times and follow hand washing protocols.

Condiments are pre-packaged and guests will receive these condiments and napkins directly from concession personnel. Facility sanitation will be maintained throughout every event.

There will be no ID bracelets for 21 and older, guests who purchase alcohol will be screened at the respective points of sale.

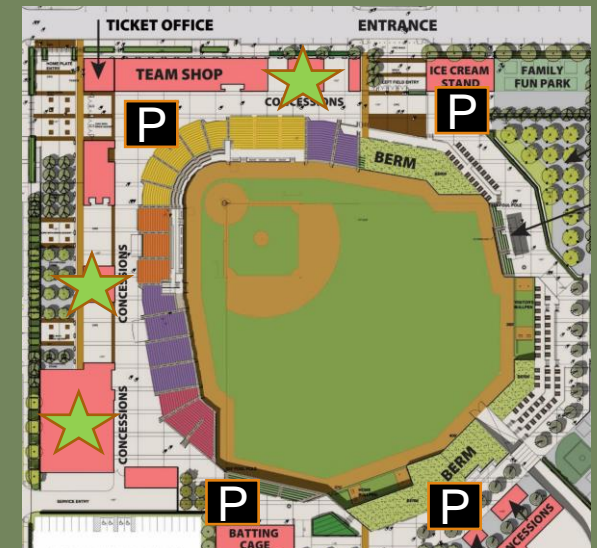
Additionally, depending on the event there could be portable locations throughout the expansive Regions Field with similar social distance practices and pre-packaged goods where possible.



Traditional Concession Stand



Portable Concession Stand



Merchandise Operation

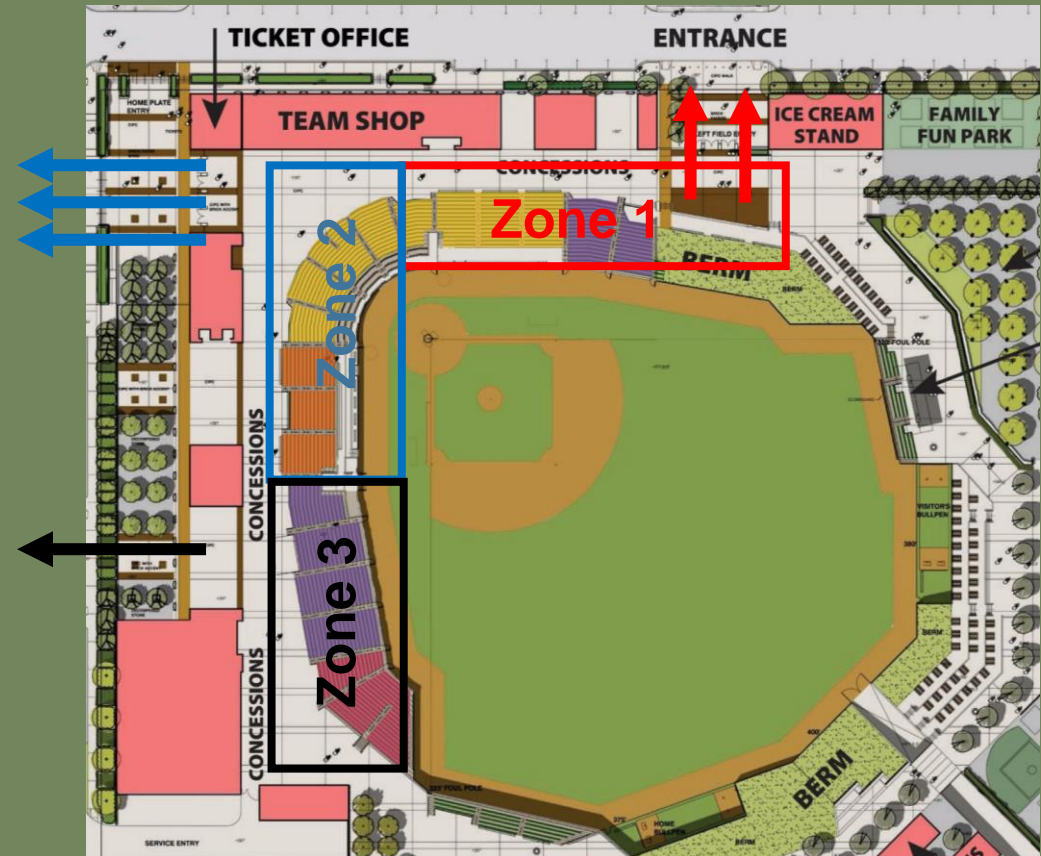


- One Way entrance and exit
- One Way merchandise aisles within store
- Socially distanced registers and queueing lines (6-foot separation)
- Capacity limit inside store with socially distanced waiting line (if necessary)

Event Conclusion, an “Orderly Egress”

At the conclusion of each event, an orderly egress will be accomplished by the following:

- Video Board and PA Announcements alerting fans to remain in their seats until their section of their Zone has been called.
- All three zones will depart through different gates at the same time.
- Sections and Rows within each zone will depart at different times as Usher's alert them the appropriate time to exit, the flow will go from left to right facing the seating bowl.
- Each zone has at least 3 exit aisles (Zone 2 has 4 exit aisles)
- Ushers in each zone will give guests verbal cues as to when there section of the zone is ready to depart.
- Ushers and Barons personnel continue to monitor the guest “flow” as they depart the seating zones until they reach the exits and off the premises.
- Video and PA will continue to alert fans of the process.



Summary

The Barons are thrilled to welcome events back to Regions Field this summer. This plan illustrates how easily the venue can be adjusted to accommodate for social distancing and patron safety. The versatility of this venue will allow the community of Birmingham to enjoy a wonderful entertainment schedule in a first-class facility with the comfort of a safe environment.

Thank you!